

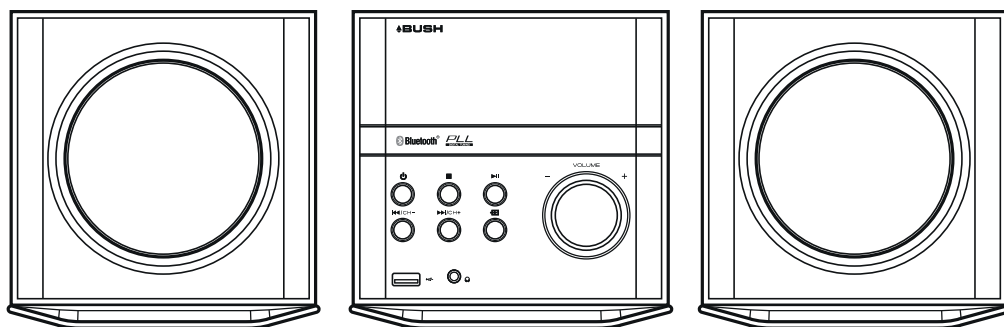
BUSH - CD Micro System With Bluetooth

Installation & User Instructions – Please keep for future reference

360/8911 (D)

BUSH

Real Life Technology



Important – Please read these instructions fully before installing or using

These instructions contain important information which will help you get the best from your appliance and ensure safe and correct installation, use and maintenance.

If you need help or have damaged or missing parts, call the Customer Helpline: 0870 600 3030

Table of contents

Accessories included	3
Overview of controls	3
Overview of controls (cont)	4
Remote control battery installation	4
Connecting the loud speakers	4
Getting started	4
Standby mode	4
General operation	5
Volume controls	5
Mute function	5
Tone controls	5
DSP effects	5
Loudness function	5
Switching modes	5
Loading a USB device	5
CD/MP3 operation	6
Playback	6
Skipping Tracks	6
Fast Searching Tracks	6
Repeat Operation	6
Numeric buttons	6
Programme playback	6
Random CD Operation	6
FM (Radio) operation	6
Scanning for stations	6
Storing a station preset	7
Recalling a station preset	7
Bluetooth operation	7
Connecting an external audio device	7
Connecting an external audio device (cont)	8
Connecting to an external amplifier	8
Earphone connection	8
UK Mains plug information	8
Technical specifications	8
Care & maintenance	8
Disc handling information	9
Disposal information	9



Product Code

CMC4BTMP3



Safety information

Important – Please read these instructions fully before using

CAUTION: TO REDUCE THE RISK OF ELECTRIC SHOCK, DO NOT REMOVE ANY COVER. NO USER-SERVICEABLE PARTS INSIDE, REFER ANY SERVICING TO QUALIFIED SERVICE PERSONNEL.

- Please read this owner's guide
- Please take the time to follow the instructions in this owner's guide carefully. It will help you set up and operate your system properly and enjoy all of its advanced features.
- Please save this owner's guide for future reference.
- The product label is located on the back of the product.
- Heed all warnings - on the product and in the owner's guide.
- Do not use this apparatus near water or moisture.
- Do not use this product near a bathtub, washbowl, kitchen sink, and laundry tub, in a wet basement, near a swimming pool, or anywhere else that water or moisture is present.
- Only use attachments/accessories specified by the manufacturer.
- Unplug this apparatus during lightning storms or when unused for long periods of time - to prevent damage to this product.
- Refer all servicing to qualified service personnel
- Servicing is required when the apparatus has been damaged in any way: such as liquid has been spilled or objects have fallen into the apparatus; the apparatus has been exposed to rain or moisture, does not operate normally, or has been dropped -
- Do not attempt to service this product yourself.
- Opening or removing covers may expose you to dangerous voltages or other hazards.
- To prevent risk of fire or electric shock, avoid overloading wall outlets, extension cords, or integral convenience receptacles.
- Use suitable power sources - Plug the product into a suitable power source, as described in the operating instructions or as marked on the product.
- The mains plug is used as the disconnect device, the disconnect device shall remain readily accessible.



This symbol means that this unit is double insulated. An earth connection is not required.

CAUTION : CLASS 1 LASER PRODUCT

This product utilizes a Class 1 laser. This laser DVD Player is equipped with safety switches to avoid exposure when the door is open and the safety interlocks are defeated. Invisible laser radiation is present when the Player's lid is open and the system's interlock has failed or been defeated. It is very important that you avoid direct exposure to the laser beam at all times. Please do not attempt to defeat or bypass the safety switches.



LASER SAFETY

This unit employs a laser, only qualified service personnel should attempt repair.

- Any electrical work that is required to install this appliance **MUST** be carried out by a qualified electrician.
- Before making any electrical connections, ensure the following:
- Do not bend, stretch or pull the supply cable in order to avoid electric shock.
- The supply voltage should be the same as that indicated in the technical specifications and the appliance rating plate.
- When installed, the power socket must be within easy reach.
- If the socket outlets in your home are not suitable for the plug supplied with this unit check with a qualified electrician for replacement.
- The use of multiple connectors or extension cables are not recommended.
- The appliance must be connected to a 100-240 volt 50/60Hz AC supply by means of a three pin socket.
- The main plug is used as the disconnect device, the disconnect device shall remain readily operable.
- In order to disconnect the apparatus from the mains completely, switch off the outlet and remove the mains plug completely.



CAUTION

**RISK OF ELECTRIC SHOCK!
DO NOT OPEN!**



This product complies with European low voltage (2006/95/EC) and electromagnetic compatibility (2004/108/EC) directives.

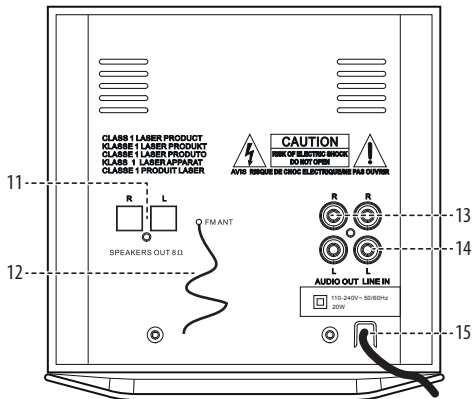
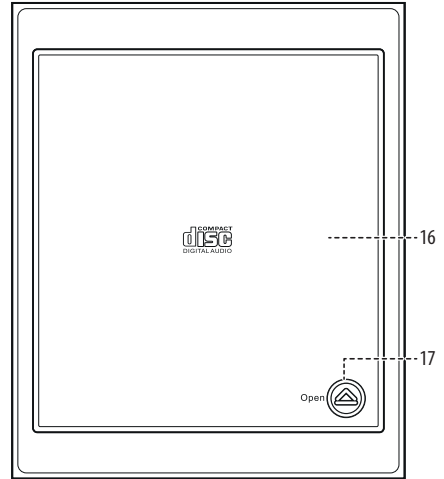
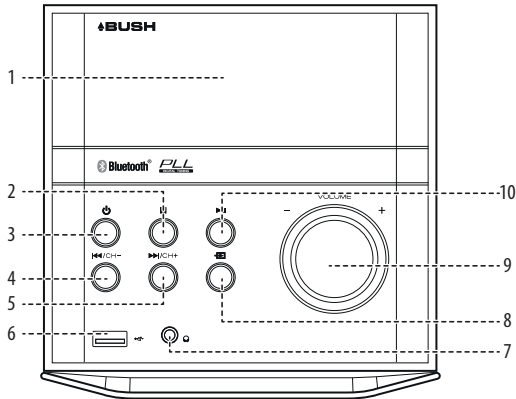
Functions & controls

Please familiarize yourself with the parts and accessories listed below

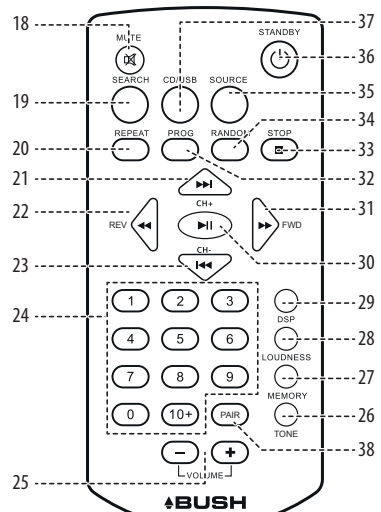
Accessories included

- 1 x CMC4BTMP3
- 1 x Remote control
- 2 x Speakers
- 1 x Instruction manual (with batteries)

Overview of controls



- | | |
|---------------------------|----------------------------|
| 1: DISPLAY | 10: PLAY/PAUSE button |
| 2: STOP button | 11: SPEAKER output sockets |
| 3: STANDBY button | 12: PIG TAIL antenna |
| 4: PREVIOUS ◀◀/CH- button | 13: AUDIO output sockets |
| 5: SKIP ▶▶/CH+ button | 14: LINE input sockets |
| 6: USB input socket | 15: MAINS cable |
| 7: EARPHONE output socket | 16: CD compartment lid |
| 8: INPUT SOURCE button | 17: CD lid release button |
| 9: VOLUME control | 18: MUTE button |



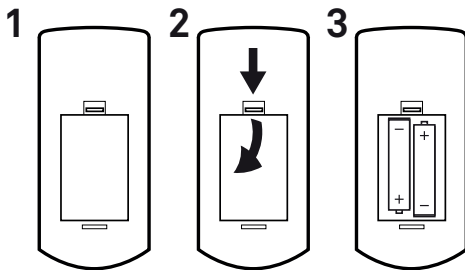
Installation

Overview of controls (cont)

- 19: SEARCH button
- 20: REPEAT button
- 21: SKIP ►►/CH+ button
- 22: REV ◀◀ button
- 23: PREVIOUS ◀◀/CH- button
- 24: NUMERIC buttons
- 25: VOLUME +/- buttons
- 26: TONE button
- 27: MEMORY button
- 28: LOUDNESS button
- 29: DSP button
- 30: PLAY/PAUSE button
- 31: FWD ►► button
- 32: PROGRAM button
- 33: STOP button
- 34: RANDOM button
- 35: INPUT SOURCE button
- 36: STANDBY button
- 37: CD/USB mode button
- 38: PAIR button

Remote control battery installation

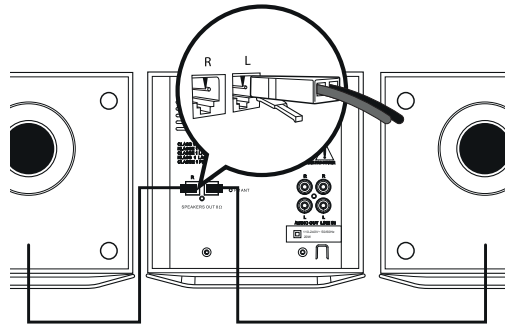
- 1: Remove the battery cover (as shown).
- 2: Insert 2 x AAA batteries (supplied), taking note that the polarities match up.
- 3: Replace the battery cover, in the same manner as you removed it.



Notes on battery usage

- Do not insert battery into the remote control in the wrong direction.
- Do not charge, heat, open or short-circuit the battery. Do not throw battery into a fire.
- If the remote control does not function correctly or if the operating range becomes reduced, replace all batteries with new ones.
- Improper replacement of batteries may result in explosive hazard. It must be replaced only by batteries with the same or equivalent type.

Connecting the loud speakers



- 1: Unwrap the speaker wires.
- 2: Place a speaker on either side of the main unit, preferably at the same height, and with at least **150mm** between each speaker and the main unit.
- 3: Connect the speaker wire plugs to the terminals on the rear of the unit (11) as shown in the diagram above. The speaker plugs will only fit in the terminals one way so make sure the clips are facing downwards when connecting.

Getting started

- 1: Connect the mains plug to a **UK** wall outlet.
- 2: Extend the pig tail antenna as far as it can go.

NOTE: The quality of the FM reception will be influenced by the positioning of the pigtail aerial.

- 3: Press the **STANDBY** button (3, 36) to wake from standby mode.

Standby mode

- 1: Press the **STANDBY** button on the unit (3) or press the **STANDBY** button (36) on the remote to put the system into standby mode. To resume normal operation press either button again.

NOTE: This unit is designed to enter **STANDBY** mode automatically after **20 MINUTES** (approximately) of inactivity.

Press the **STANDBY** button to wake the unit.

User instructions

General operation

Volume controls

- 1: Rotate the **VOLUME** control (9) clockwise or press the **VOLUME+** button (25) on the remote to increase the volume level.
- 2: Rotate the **VOLUME** control (9) anti-clockwise or press the **VOLUME-** button (25) on the remote to decrease the volume level.

Mute function

- 1: Press the **MUTE** button (18) at any time to silence the output.
- 2: Press again to resume audio output.

Tone controls

Adjust the Bass & Treble tone controls if required.

- 1: Press the **TONE** button (26) repeatedly on the remote control to cycle the tone options.
- 2: The first press is Volume. Use the **VOL+/-** buttons or the **VOLUME** control (9) to adjust.
- 3: The second press is Treble. Use the **VOL+/-** buttons or the **VOLUME** control (9) to adjust.
- 4: Press the **TONE** button again a third time to edit the Bass. Use the **VOL+/-** buttons or the **VOLUME** control (9) to adjust.

DSP effects

- 1: Pressing the **DSP** button (29) on the remote repeatedly cycles through a set of **EQ** presets to alter the sound field. Choose from: Jazz, Rock, Pop, Classic & Off.

Loudness function

This function adds a rounder bass sound at low levels.

- 1: Press the **LOUD** button (28) on the remote to enable.
- 2: Press again to disable the effect.

Switching modes

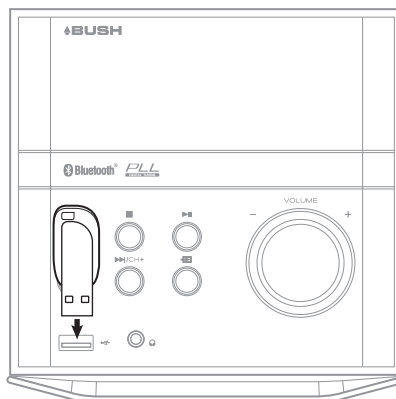
To switch between the available modes : CD, FM, LINE INPUT & BLUETOOTH.

- 1: Press the **SOURCE** button (8, 35) to cycle through the options.
- 2: To select **USB** input mode. You must first select **CD** by following (step 1). Then press the **CD/USB** button (37) on the remote control to switch to the **USB** mode.

Loading a USB device

To connect a USB flash drive follow the below steps.

- 1: Connect the **USB** device to the **USB** input socket (6) on the front of the unit as shown.



- 2: Follow step 2 from 'Switching modes' above to select the **USB** input mode.
- 3: The device can be disconnected by removing carefully from the **USB** input socket.

NOTES:

- Do not disconnect the device during operation
- Depending on the capacity of the device, reading may take more than 1 minute.
- This unit does not support the NTFS file system. Format all USB devices in FAT or FAT32.
- The maximum number of files supported is 999.

User instructions

CD/MP3 operation

Playback

- 1: Make sure you are in **CD** or **USB** mode, if not read the 'Switching modes' section above.
- 2: Press the lid release button (17) on top of the unit. When the lid opens insert a disc (label side facing upwards) and close the lid until you hear a click. Or follow 'Loading a USB device' for **USB MP3** playback.
- 3: When the door is closed "LOAD" will appear on the display as the unit detects compatible audio tracks.
- 3: Playback will begin automatically from Track **01**.
- 4: To stop playback press the **STOP** button (2, 33).
- 5: To pause playback press the **PLAY/PAUSE** button (10, 30) during playback. To resume playback press once more.


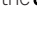
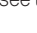
Skipping Tracks

- 1: To skip to the next track on a disc press **▶▶** (5, 21).
- 2: To skip to the previous track press **◀◀** (4, 23).

Fast Searching Tracks

- 1: To fast forward a track during playback press **▶▶ FWD** (31) on the remote control. Each press of the button increases the search speed **EG: 2x, 4x & 6x** the next press will resume normal playback. To fast rewind a track during playback press the **◀◀ REV** (22) button.

Repeat Operation

- 1: During playback pressing the **REPEAT** button (20) will flag the current track to repeat indefinitely. You will see  flash on the display.
- 2: Pressing the **REPEAT** button again will repeat all tracks on the disc. You will see the  icon stop flashing and remain solid.
- 3: To cancel the repeat function press the **REPEAT** button for a third time. You will see the  icon disappear from the display.

Numeric buttons

While listening to a CD or MP3 tracks a specific track number can be played by pressing the relative digit on the number buttons. EG track 6 would be 6. To play track 12 you would press the 10+ button then 2.

Programme playback

Should you wish to create a playlist from a CD or MP3 tracks. Follow the below steps to program the playlist.

- 1: Ensure any loaded disc is in **STOP** mode. Press the **PROG** button (32) to enter the programme setup function.
- 2: You will see **P01** appear on the display to indicate program track **01**.
- 3: Use the **◀◀/▶▶** buttons (4/5, 23/21) to skip between the track numbers. or use the numeric buttons to enter the track number directly.
- 4: When you have selected the track you wish to program press the **PROG** button (32) again.
- 5: The program track no will change to **P02**, and you can continue programming following steps **3-4** each time.
- 6: When you have programmed your playlist press the **PLAY/PAUSE** button (10, 30) to begin playback.
- 7: To cancel the programmed playlist press the **STOP** button (2, 33).

Random CD Operation

- 1: Press the **RANDOM** button (34) on the remote control. You will see 'RAN' appear on the display and the **CD** contents will be played once in a random order.
- 2: To cancel the random operation press the **RANDOM** button again. You will see 'RAN' disappear from the display.

FM (Radio) operation

Scanning for stations

- 1: You can skip up or down the frequency range manually by pressing the **◀◀ REV** (22) or **▶▶ FWD** (31) buttons on the remote or **◀◀** (4) or **▶▶** (5) buttons on the unit to increase or decrease the frequency in **0.05 MHz** increments.
- 2: Alternatively you can press the **SEARCH** button (19). This will scan the entire frequency range and store any strong stations located into the preset memory list.

NOTE: Pressing the **SEARCH** button again erases any previously stored stations on the preset list.

User instructions

Storing a station preset

- 1: To store a tuned station to a preset location press the **MEMORY** button (27) 'CH01' will appear on the display to indicate Preset location '01'.
- 2: Press the **◀▶** buttons (23/21) on the remote or press and hold (4/5) on the unit to cycle through the preset locations 1-20.
- 3: When the preset location required is selected press the **MEMORY** button (27) again to store the tuned station.

Recalling a station preset

- 1: To select a preset in radio mode either press the required numeric button(s) or use the **◀▶** buttons (23/21) on the remote or press and hold (4/5) on the unit to cycle through the preset locations.

Bluetooth operation

When using the Bluetooth connection, you can listen to audio wirelessly from a Bluetooth stereo audio device within 10 metres of the CMC4BTMP3.

- 1: Select **BT** mode using the instructions from the '**Switching modes**' section.
- 2: When the Bluetooth mode is selected a **BLUE** indicator led will flash 3 times and then a beep will be heard. The unit is now in pairing mode and will pair with any previously connected devices. When in pairing mode a **RED** indicator led will flash until paired.
- 3: If you have not connected a device you can now enable '**discovery**' mode on your device and select the **CMC4BTMP3** Bluetooth connection. If you are asked for a pass code enter '**0000**'.

NOTE: If you turn off either device before pairing is complete the process will need to be repeated when powered ON again.

- 4: Once paired the **BLUE** led indicator will flash slowly and a beep will be heard.
- 5: When playback from the device is initiated the **RED** & **BLUE** led indicators will flash simultaneously
- 6: If using a mobile phone as an audio source, when receiving a call audio playback stops while you receive the call. When you hang up the audio is restored.
- 7: To disconnect (**un-pair**) a connected bluetooth device press the **PAIR** button (38).

Bluetooth operation (cont)

When making a phone call you will need to either disable bluetooth on your mobile device or switch to another source input should you not wish the call to be output from the speakers.

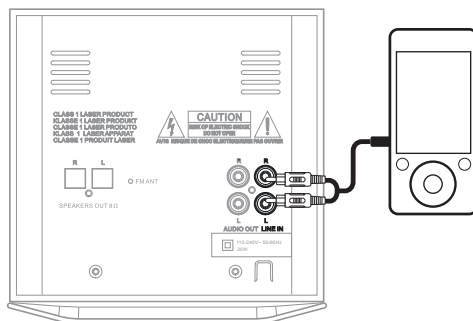
NOTE: the volume output is effected by the volume level on the audio source EG: Phone or laptop, so make sure that is set to about 70-80% (not too loud to avoid distortion).

Any obstacles between devices may affect the bluetooth connection

When a mobile phone is paired with too many devices, you may need to clear the pairing history to connect.

Connecting an external audio device

External audio sources such as iPod's & MP3 players can be connected using a 3.5mm to RCA audio cable (not supplied).



- 1: Connect the **3.5mm** end of the cable to the **AUDIO** devices headphone /Line output and **RED & WHITE RCA** plugs to the **LINE IN** input (14) on the rear of the unit.

NOTE: Make sure the RED plug connected to the RED input and the WHITE plug to the WHITE input.

- 2: Select **LINE IN** mode using the instructions from the '**Switching modes**' section.
- 3: Press play on the external audio device.
- 4: Adjust the volume to your desired level.

User instructions

Connecting an external audio device (cont)

NOTE: when connecting via the headphone output the volume of the Micro system is affected by the volume control on the player.

Ensure that the player is set to about 70-80% to avoid distortion.

Connecting to an external amplifier

Should you wish to connect the CMC4BTMP3 to an external amplifier or soundbar for example follow the below steps.

- 1: Connect an **RCA to RCA** audio cable to the **AUDIO** output **(13)** on the rear of the unit.
- 2: Connect the other end of the **RCA** cable to an audio input on the amplifier/soundbar.
- 3: Refer to your amplifier instructions to select the correct output.

Earphone connection

- 1: Connect the **3.5mm** earphone plug into the **EARPHONE** socket **(7)** on the unit.

NOTE: To prevent possible hearing damage, do not listen at high volume levels for long periods.

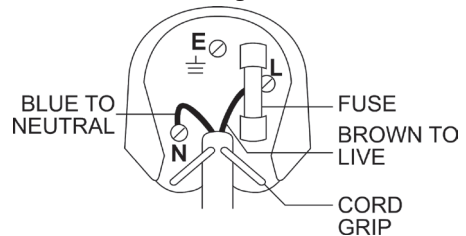
If you hear no sound during playback, do not turn the volume up as the music may suddenly begin at a high volume.

Excessive sound pressure from earphones and headphones can cause hearing loss.

To avoid damaging your ears, adjust the volume to the lowest safe level before playing, and turn up to the desired level when playback has started.

UK Mains plug information

For your convenience a mains plug with a fuse (3 Amp) has been fitted to this appliance. For your safety please observe the following information.



- The unit is designed to operate on AC mains supply 230 volts, 50 Hz.
- The wires in the mains lead are coloured in accordance with the following code:
 - BLUE - NEUTRAL
 - BROWN - LIVE

Under no circumstances should the Neutral or Live wires be connected to the 'E' (Earth) terminal.

Technical specifications

Supply Voltage, Mains: 230-240V~50Hz
Max. Power Consumption: 20W
Speaker Power: 2 x 5W
FM: 87.5-108 MHz
Bluetooth: CSR 4.0
Dimensions CD unit: W150*D200*H150mm
Dimensions speaker: W145*D170*H150mm
Net Weight: 2.6kg

Care & maintenance

After using your radio

- Set to Standby.
- Switch the unit off at the mains and unplug it if you are leaving it unattended for a long period (holidays etc).
- Avoid leaving batteries fitted if you leave the radio unattended for long periods. They may leak and damage the radio.

Care and cleaning

- All care and cleaning operations should be carried out with the unit unplugged from the mains power.
- Occasionally wipe the cabinet with a lint free duster. Never clean the unit with liquids or solvents.

Disc handling information

- Do not touch the playback side of the disc.
- Do not attach paper or tape to disc.



- Fingerprints and dust on the disc cause picture and sound deterioration. Wipe the disc from the centre outwards with a soft cloth. Always keep the disc clean.



- If you cannot wipe off the dust with a soft cloth, wipe the disc lightly with a slightly moistened soft cloth and finish with a dry cloth.
- Do not use any type of solvent such as thinner, benzene, commercially available cleaners or antistatic spray for vinyl. It may damage the disc.
- Do not store discs in a place subject to direct sunlight or near heat source.
- Do not store discs in a place subject to moisture and dust such as a bathroom or near a humidifier.
- Store discs vertically in a case, stacking or placing object on discs outside or their case may cause warping.

Disposal information



WEEE marking “Information for the consumer”

Disposal of your old product Your product is designed and manufactured with high quality materials and components, which can be recycled and reused. When this crossed out wheeled bin symbol is attached to a product it means the product is covered by the European Directive 2002/96/EC. Please make yourself aware of the local collection system for electrical and electronic products. Please act according to your local rules and do not dispose of your old products with your normal household waste. The correct disposal of your old product will help prevent potential negative consequences for the environment and human health.

User instructions

Troubleshooting

In the unlikely event of difficulties with your appliance please follow the trouble shooting guide below.

If the problem persists, contact the retailer if the machine is still under guarantee.

Customer helpline: 0870 600 3030

Problem	Reason(s)	Solution(s)
No Power	<ul style="list-style-type: none">• Power cable not connected to wall socket• Power socket is not switched on	<ul style="list-style-type: none">• Make sure the plug is connected• Switch the power on
No Sound CD/LINE IN/RADIO	<ul style="list-style-type: none">• Volume is too low	<ul style="list-style-type: none">• Increase the volume
No Sound from LINE IN input	<ul style="list-style-type: none">• LINE IN source volume is too low	<ul style="list-style-type: none">• Increase the output volume of the LINE IN source.
Sound is distorted Sound is distorted from AUX input	<ul style="list-style-type: none">• Volume is too high• LINE IN source volume is too high	<ul style="list-style-type: none">• Reduce the volume• Reduce the output volume of the LINE IN source.
Unable to Play	<ul style="list-style-type: none">• No disc in the tray• Disc not loaded properly• Disc is dirty	<ul style="list-style-type: none">• Insert a compatible disc• Check the disc loaded• Clean the disc
Static Sound	<ul style="list-style-type: none">• Poor reception	<ul style="list-style-type: none">• Re-locate the antenna (FM)
Bluetooth connection drops out	<ul style="list-style-type: none">• Obstacle blocking the path to the devices	<ul style="list-style-type: none">• Remove the obstacle
Unit switches off after 20 minutes of inactivity	<ul style="list-style-type: none">• Auto standby mode in operation	<ul style="list-style-type: none">• This unit is designed to enter STANDBY mode automatically after 20 MINUTES of inactivity. Press the STANDBY button to wake the unit.

Guarantee



PRODUCT GUARANTEE

This product is guaranteed against manufacturing defects for a period of



Year

This product is guaranteed for twelve months from the date of original purchase.

Any defect that arises due to faulty materials or workmanship will either be replaced, refunded or repaired free of charge where possible during this period by the dealer from whom you purchased the unit.

The guarantee is subject to the following provisions:

- The guarantee does not cover accidental damage, misuse, cabinet parts, knobs or consumable items.
- The product must be correctly installed and operated in accordance with the instructions contained in this manual.
- It must be used solely for domestic purpose.
- The guarantee will be rendered invalid if the product is re-sold or has been damaged by inexpert repair.
- Specifications are subject to change without notice.
- The manufacturer disclaims any liability for the incidental or consequential damages.
- The guarantee is in addition to, and does not diminish your statutory or legal rights.

Guarantor: Argos Limited
489 - 499 Avebury Boulevard
Central Milton Keynes
MK9 2NW