



**GRAPHITE PRECISION
HAIR CLIPPER
E987U**


SAFETY CAUTIONS


- Read these safety precautions carefully before using the unit! This appliance should only be used as described within this instruction booklet. Please retain for future reference.

IMPORTANT CHILD SAFETY

- **ALWAYS** keep out of reach of children (during and after use and whilst cooling).
- This appliance should not be used, cleaned or maintained by children.
- Always take extra care if used on children or near children.
- Do not use on very young children.
- This appliance is not intended for use by persons (including children) with reduced physical, sensory or mental capabilities, or lack of experience and knowledge, unless they have been given supervision or instruction concerning use of the appliance by a person responsible for their safety. Children should be supervised to ensure that they do not play with the appliance.

IMPORTANT SAFETY

- **WARNING:** Do not use this device in a bathtub, shower, or water-filled reservoir.
- **WARNING:** Keep the power cord, the appliance and appliance's charging stand dry and away from sources of water so that they do not fall into the water. For appliances with a removable power supply unit, remove the power cord before cleaning.
- **UK Only:** This appliance must not be used in the bathroom. 
- **Outside the UK:** If using the appliance in a bathroom, unplug after use as the proximity of water can be dangerous even if the appliance is switched off. For additional protection the installation of a residual current device (RCD) with a rated residual operating current not exceeding 30mA is advisable in the electrical circuit supplying the bathroom. Ask your installer for advice.
- Always inspect the appliance before use for noticeable signs of damage. Do not use if damaged or if the appliance has been dropped. In the event of damage contact the Customer Care Line.
- Do not use the appliance if the charging adaptor or lead is damaged. In the event of damage, discontinue use immediately. If the charging adaptor or lead is damaged, it must be replaced by the manufacturer. Return the appliance to the Customer Care Centre. No repair must be attempted by the consumer.
- Only use the accessories supplied with this appliance.
- **WARNING!** For the purposes of recharging the battery,

only use the detachable charging supply unit provided with this appliance CA78. This symbol  indicates there is a detachable power supply for means of charging.

- Do not leave the appliance unattended when switched on.
- Do not expose the appliance or battery to excessive temperatures.
- Be aware of the risk of terminals of the battery-operated appliance or battery being short circuited by metal objects.
- Do not leave the appliance plugged in for more than 24 hours.
- Unplug immediately if any problems occur during use.
- Do not place the appliance on any surface whilst in operation.
- Special care is required when using the appliance close to the ears, eyes and face.
- This product contains a Li-ion rechargeable battery that is not to be removed from the appliance for charging. The batteries in this appliance are non-replaceable. Batteries must be disposed of safely at the end of life. Please take to a recycling centre for safe disposal. If the battery leaks, avoid touching it and dispose of it at a recycling centre.
- The supply terminals are not to be short circuited.
- For domestic use only.
- This product complies fully with all appropriate legislation and the standards relevant to this type and class of appliance. We are an ISO9001:2015 certified company that continually evaluates our Quality Management

System performance. If you have any queries regarding product safety and compliance, please contact the Customer Care Line.

WEEE - END-OF-LIFE ELECTRICAL AND ELECTRONIC EQUIPMENTS

- In everybody's interest and to actively participate in protecting the environment and human health:
- Do not discard your products with your unsorted household wastes.
- The WEEE (Waste electrical and electronic equipment) must be collected separately.
- Use the return and collection systems dedicated to the WEEE available in your area. In this way, some materials can be recycled, re-used or recovered.
- By ensuring this product is disposed of properly, you will help prevent potential negative consequences for the environment and human health due to possible content of hazardous substances.

For more detailed information about the disposal of this product, please contact your local household waste disposal service.

Recycling rechargeable batteries

- Some BaByliss appliances may have rechargeable batteries. Only for the purpose of recycling, these batteries must be removed from the appliance before it is discarded.

- Disconnect the appliance from the mains before removing the batteries.
- Remove the batteries by carefully opening the appliance case using the appropriate tools, then dispose of the batteries at a collection point intended for this purpose.
- Please contact BaByliss for additional information on how to remove the batteries.

INSTRUCTIONS FOR USE

IMPORTANT! Only use the adaptor and attachments supplied with this appliance.

General

- Always inspect the appliance before use to ensure the clipper blades are free from hair, debris etc.
- Use on clean, dry hair that has been combed until tangle-free.

Oiling Instructions

- For optimum cutting performance, it is highly recommended to oil the blades after every use.
- When using the oil for the first time, unscrew the cap and cut off the very end of the plastic tube with a pair of scissors.
- Switch the appliance on.
- Holding the clipper at a 45 degree angle, gently squeeze the oil tube and apply 2 drops directly onto the blades.
- Leave the unit on for a further few seconds to allow the oil to thoroughly spread along the length of the blades.
- Switch off the unit and remove any excess oil by gently dabbing with a cloth before using on hair.

Charging the appliance

- The clipper is equipped with lithium ion batteries.
- Before using for the first time, the appliance should be fully charged continuously for 3 hours. This initial super-charge ensures optimum power performance to ensure smooth fast cutting every time. Maximum battery capacity will only be reached after 3 charging and discharging cycles.
- Insert the adaptor into the base of the appliance, plug into a suitable mains socket and switch on.
- The charging indicator light will flash when the appliance is plugged in and connected to the mains.
- When the appliance has finished charging the indicator light will stop flashing and remain static.
- A 3 hour charge will provide approximately 240 minutes use. A 30 minute quick charge will provide approximately 30 minutes use.

NOTE: Do not charge the appliance for longer than the recommended time.

Preserving the batteries

In order to maintain the optimum capacity of the rechargeable batteries, the appliance has to be fully discharged every 6 months approximately. Then recharge the appliance to full capacity, again for 3 hours.

Mains Operation

- Ensure the appliance is switched off.
- Connect the adaptor to the base of the appliance and plug the adaptor into a suitable mains socket.
- The appliance is now ready for use.
- **NOTE:** The appliance should not be used for longer than 20 minutes when operated from the mains.

Cordless Operation

- Insert the adaptor into the base of the appliance, plug into a suitable mains socket and switch on. The indicator LED will appear when the adaptor is correctly inserted into the appliance and connected to the mains.

- Once the appliance is fully charged the indicator light will stop flashing and remain static. Unplug the adaptor from the mains socket and the appliance and prepare for use.
- Fully charged, the appliance can be used for at least 240 minutes.

Comb Guides

This appliance is supplied with 8 comb guides:

Cutting Length	Grade
3mm	#1
6mm	#2
9.5mm	#3
13mm	#4
16mm	#5
19mm	#6
22mm	#7
25mm	#8

- To attach a comb guide, ensure the appliance is switched off. Position the comb guide over the front of the clipper blade and slide over the head. Push and click the rear of the comb guide into position.
- To remove the comb guide, ensure the appliance is switched off. Push the tab on the rear of the comb guide away from the head and lift off (Fig.1).

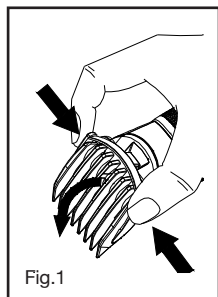


Fig.1

Taper Control

The easy-twist taper control enables fine cut adjustment for precision clipping. Ideal to create the perfect fade or blending two lengths.

Note: Set the tuning thumb wheel height to the maximum (3.0) before re-attaching the blades are removal for cleaning.

Clipping

For an all over even cut:

- Attach a comb guide as required – your clipper is supplied with 8 comb guides (grades 1-8). Each comb guide is labelled.
- Switch the clipper on and the blades will start to move.
- Starting at the nape of the neck, hold the clipper with the teeth of the clipper pointing upwards, ensuring that the comb guide is resting flat against the head.
- Slowly move the clipper upwards and outwards through the hair towards your crown, against the direction of the hair growth. The comb guide will help to lift the hair and the blades will cut the hair at the desired length.
- Once the desired length is achieved at the back of the hair, start clipping the top and sides.
- Hold the clipper to the front of your hair with the teeth pointing towards the back of your head, and move the clipper towards your crown. Repeat as necessary, moving in rows from the front and the sides of your head to the back.
- You should achieve an even length cut all over your head.

For a shorter back and sides, with length on the top:

- Attach the longer comb guide as required for the top of your hair – your clipper is supplied with 8 comb guides (grades 1-8). Each comb guide is labelled.
- Switch the clipper on and the blades will start to move.
- Hold the clipper to the front of your hair with the teeth pointing towards the back of your head and move the clipper towards your crown. Repeat as necessary, moving in rows from the front and the sides of your head to the back.
- If you then wish to take the back and sides of your hair to a shorter length, switch off the appliance and attach a shorter comb guide.
- Starting at the nape of the neck, with the comb guide flat against the head, move the clipper upwards and outwards over the area you want to take shorter.
- Repeat on the sides of the hair, starting with the teeth of the clipper pointing upwards and comb guide flat against the area above the ear, again moving the clipper upwards and outwards.

Outlining

- To tidy up the edges around your cut e.g. neckline and sideburns, detach the comb guides.
- Hold the appliance upside down, so the front of the clipper is facing towards your head.
- Hold the clipper straight on your sideburns or neckline and move the clipper downwards. This will give you a clean, smooth finish.

Cleaning & Maintenance

To maintain optimum performance, the appliance should be cleaned after each use.

For easy cleaning, the blades on your BaByliss clipper are removable. Regular cleaning will maintain their high performance level.

To clean proceed as follows:

- Remove the comb guide after use. Rinse under running water and dry thoroughly before storage or use.
- To make cleaning easier the clipper blades may be removed. Make sure that the clipper is switched off and remove the cutting guide.
- Hold the clipper with the blades pointing upwards and remove them by pushing the tip of the blade away from the unit (Fig. 2).
- Carefully brush the blades using the cleaning brush to remove hair and rinse the blades under water without immersing the appliance.
- Ensure the blades are thoroughly dry before attempting to reattach to the unit.

IMPORTANT: To reattach the blades to the unit, ensure the appliance is switched off. Set the length setting height to the maximum (3.0). Position the bottom of the blade attachment on the unit and push down at the top until it clicks back into place. (Fig. 3).

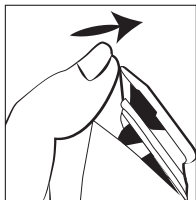


Fig.2

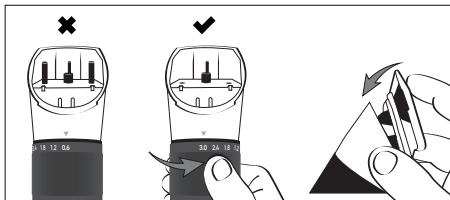


Fig.3

- To preserve your clipper's efficiency, we recommend cleaning the blades regularly. After cleaning, switch the appliance on and oil the blades using a few drops of the lubricating oil supplied. Only use the lubricating oil supplied with the appliance as this is specifically formulated for high speed clippers and does not evaporate or slow the blades.

NOTE: Do not attempt to repair or replace the blades. In the event that the blades become blunt or damaged, contact the Conair Customer Care Line (refer to UK 'After Sales Service' section for further information).

BATTERY DISPOSAL



This appliance contains Li ion batteries. To protect the environment this appliance and its batteries must be disposed of safely. At the end of its life, please take this appliance to a recycling centre, where the internal rechargeable battery should be removed by a professional and recycled separately. For more information about the recycling of electrical and battery operated appliances please contact your local council office or your household waste disposal service. For specific enquiries regarding the replacement of batteries in this product please contact our Conair Customer Care Line (refer to 'UK After Sales Service' section).

UK GUARANTEE

This BaByliss appliance is guaranteed for consumer use for 3 years and is only valid within the United Kingdom.

This guarantee covers consumer use only **i.e.** defects occurring under normal use within the home from date of purchase or date of delivery, whichever is later.

If the product develops a fault due to defects in materials or manufacture **within 12 months** from the date of purchase, to avoid delays and unnecessary inconvenience, where possible please return the product to the point of purchase for an exchange.

If the product develops a fault due to defects in materials or manufacture **after 12 months** from the date of purchase, and within the guarantee period, Conair UK After Sales Service will repair or replace the product.

Exclusions

This guarantee will no longer be valid meaning that The Conair Group Ltd will not be liable to repair or replace your product where:

- 1.) The appliance has been used on a voltage supply other than that which is marked on the product, or advised within this instruction booklet
- 2.) The appliance has been purchased from an unauthorised stockist*
- 3.) The appliance is used for professional / non domestic usage
- 4.) Repairs or alterations have been attempted by unauthorised persons
- 5.) The failure of the appliance is a direct result of misuse
- 6.) The failure is a result of not following the instructions for use

This guarantee does not cover any cosmetic damage due to misuse of the product nor any damage to persons or property that occurs because of product misuse.

*unauthorised stockists include, but are not limited to online auction sites, private sellers and those selling second hand goods, refurbished products etc.

Please contact the Conair Customer Care Line on 03705 133 191 (09:00 to 17:00 Monday to Friday) or e-mail ukinfo@conair.com for further information on authorised stockists.

It is important to retain your proof of purchase. We recommend attaching your receipt to this page.

Even where a refund may be applicable, no refund will be provided without a valid receipt or proof of purchase, we will only be able to offer a repair or replacement service. Please note this does not apply if the product was purchased directly from The Conair

Group Ltd.

Guarantees on replacement products run from the original purchase date or date of delivery, whichever is later, and **not** from the date of replacement.

This guarantee is an additional benefit and does not affect your statutory rights as a consumer.

If you have any queries regarding this guarantee please contact the Conair Customer Care Line on 03705 133 191 (09:00 to 17:00 Monday to Friday) or e-mail ukinfo@conair.com

UK AFTER SALES SERVICE

For further advice on using the appliance or should you need to return your product, please contact the Conair Customer Care Line on 0370 5 133191 (09:00 to 17:00 Monday to Friday) or email your enquiry to ukinfo@conair.com.

The return address is:

Customer Care Centre
Conair Logistics
Unit 4
Revolution Park
Buckshaw Avenue
Buckshaw Village
Chorley
PR7 7DW

Please enclose your returns number, name and address details, together with a copy of proof of purchase and details of the fault. Please note this Instruction Booklet is not the guarantee.