



We love that you are rocking JLab!
We take pride in our products and fully stand behind them.



YOUR WARRANTY

All warranty claims are subject to JLab authorization and at our sole discretion. Retain your proof of purchase to ensure warranty coverage.



CONTACT US

Reach out to us at support@jlab.com or visit intl.jlab.com/contact

REGISTER TODAY

intl.jlab.com/register

Product updates | How-to tips
FAQs & more

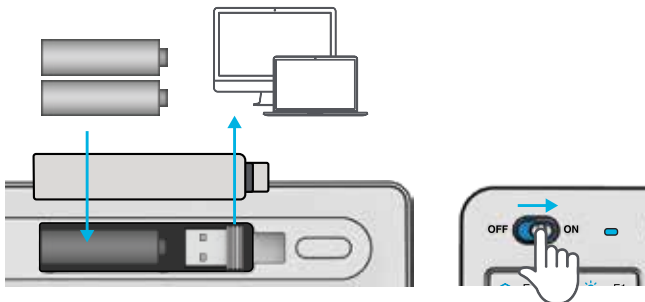
1 CONNECT WITH DONGLE

Install included batteries

2 batteries included in package

Install 2.4 dongle and turn keyboard on

GO Keys will auto connect



2 CONNECT WITH BLUETOOTH

Quick Press CONNECT

Switch to preferred connection:

Purple = 2.4

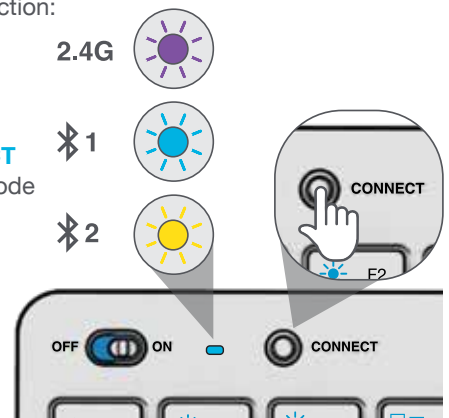
Blue = 1

Yellow = 2

Press and hold CONNECT

LED will blink in pairing mode

Select "JLab GO Keys" in device settings



Have a JLab GO Mouse?

Scan the QR code to learn how to pair both your devices with just one dongle.

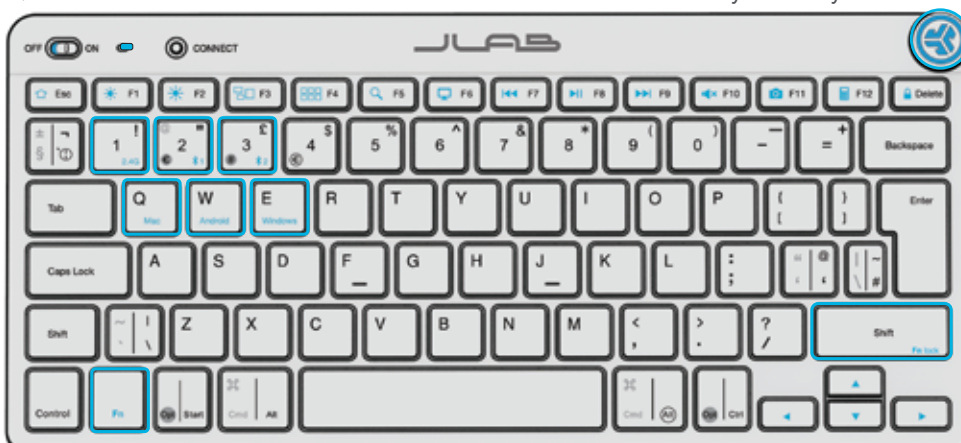
3 KEYS

Fn + 1 / 2 / 3:

Quick connection switch

Fn + Q / W / E:

Switch to Mac / Android / Windows keyboard layout



MEDIA DIAL

Vol +/- : Rotate

Play/Pause: Single press

Track Forward: Double press

Track Back: Press and hold

Fn + Right Shift: Lock / Unlock Fn key (See Shortcut Keys)

SPECIAL CHARACTERS

Symbols to the left (grey) show Mac mode functions. Symbols to the right (white) show PC functions.

Mac Controls



PC Controls

Access Mac characters (grey circle) with the Opt key. Access PC symbols (white circle) with the right Alt key.

Opt + E



Alt + E

SHORTCUT KEYS

Fn +	MAC	PC	Android
Esc	N/A	Homepage	Homepage
F1	Brightness -	Brightness -	Brightness -
F2	Brightness +	Brightness +	Brightness +
F3	Task Control	Task Control	N/A
F4	Show Applications	Notification Center	N/A
F5	Search	Search	Search
F6	Desktop	Desktop	N/A
F7	Track Back	Track Back	Track Back
F8	Play/Pause	Play/Pause	Play Pause
F9	Track Forward	Track Forward	Track Forward
F10	Mute	Mute	Mute
F11	Screenshot	Screenshot	Screenshot
F12	Dashboard	Calculator	N/A
Delete	Screen lock	Screen lock	Screen lock

QUICK TIPS

- When connecting through Bluetooth on Mac/PC/Android, GO Keyboard should be in Bluetooth 1 or Bluetooth 2 setting. Press hold CONNECT button until the light starts blinking. Enter your Bluetooth device settings to connect.
- If your device is not connecting, Forget the "JLab GO Keys" in you device settings. Turn off and on the the GO Keyboard. Press hold the CONNECT button until blinking light to enter pairing mode. Reenter your device settings to repair.
- If the 2.4G USB dongle is not registering connection:
 1. Remove dongle
 2. Press Fn + 1 to enter 2.4G connection
 3. Press and hold CONNECT button until purple light blinks
 4. Plug dongle back in
- Keys are non-removeable. Do not try to remove in any circumstance.
- To clean the keyboard, do not use spray cleaner directly on the keyboard. Lightly spray a cloth or microfiber fabric and then wipe the keyboard.
- To completely disconnect all wireless devices and return to factory settings, press hold "T"+"H"+"J" for 3+ seconds.



[Shop products](#) | [Product alerts](#) | [Burn-in your headphones](#)

JLab Store + Burn-in Tool

