



EPIC
KEYBOARD

We love that you are rocking JLab!
We take pride in our products and fully stand behind them.



YOUR WARRANTY

All warranty claims are subject to JLab authorization and at our sole discretion. Retain your proof of purchase to ensure warranty coverage.



CONTACT US

Reach out to us at support@jlab.com or visit intl.jlab.com/contact

REGISTER TODAY

intl.jlab.com/register

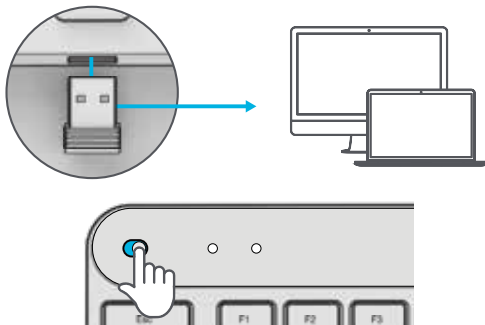
Product updates | How-to tips
FAQs & more

1 CONNECT WITH DONGLE

Install 2.4G USB dongle and switch keyboard on

Epic Keys will auto connect

If connection is unsuccessful, press and hold 2.4 until button flashes quickly. Unplug and re-plug dongle into computer.



Have a JLab Epic or JBuds Mouse?

Scan the QR code to learn how to pair both your devices with just one dongle.

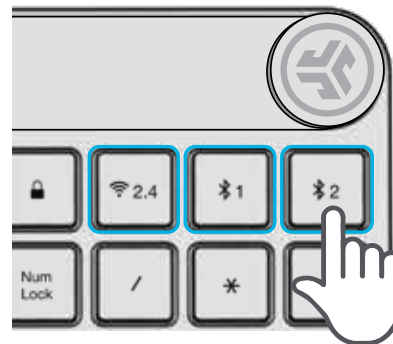
2 CONNECT WITH BLUETOOTH

Press and hold **1** or **2** for Bluetooth pairing

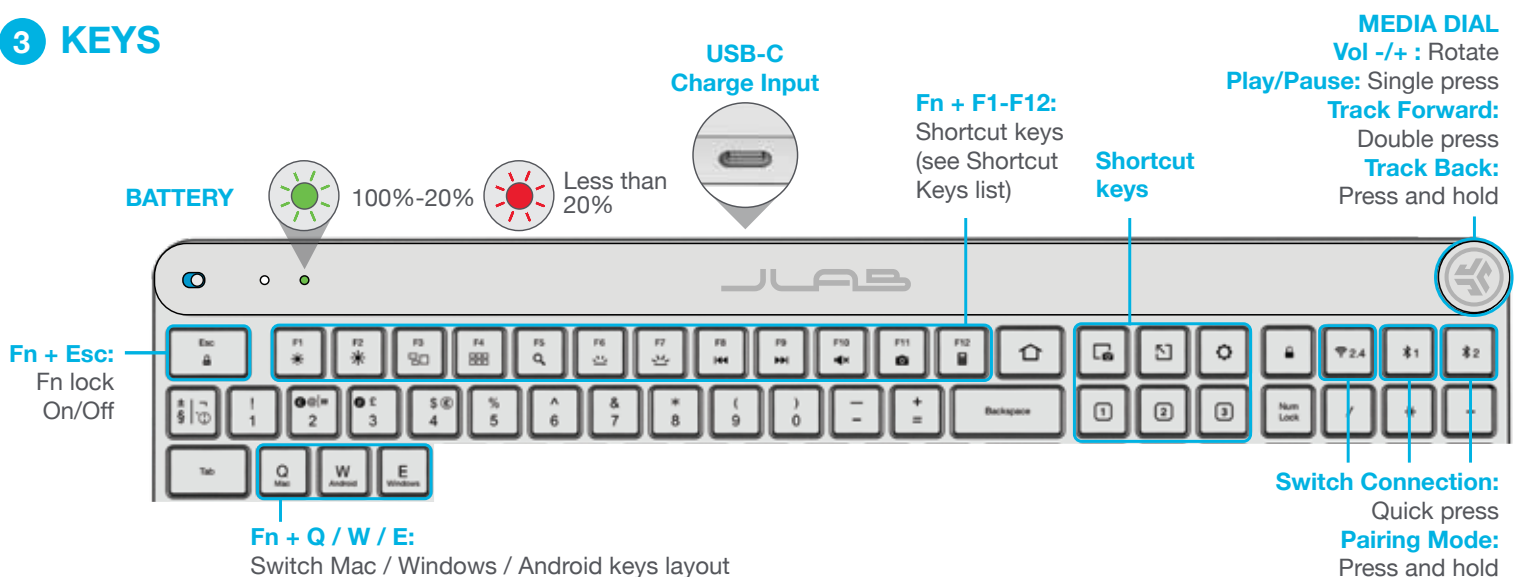
LED will blink in pairing mode

Press and hold **CONNECT**

Select "JLab Epic Keys" in device settings



3 KEYS



SPECIAL CHARACTERS

Symbols to the left (grey) show Mac mode functions. Symbols to the right (white) show PC functions.



Access Mac characters (grey circle) with the Opt key. Access PC symbols (white circle) with the right Alt key.



SHORTCUT KEYS

Fn +	MAC	PC	Android
Esc	FN Lock	FN Lock	FN Lock
F1	Brightness -	Brightness -	Brightness -
F2	Brightness +	Brightness +	Brightness +
F3	Task Control	Task Control	N/A
F4	Show Applications	Notification Center	N/A
F5	Search	Search	Search
F6	Backlit -	Backlit -	Backlit -
F7	Backlit +	Backlit +	Backlit +
F8	Track Back	Track Back	Track Back
F9	Track Forward	Track Forward	Track Forward
F10	Mute	Mute	Mute
F11	Screenshot	Screenshot	N/A
F12	N/A	Calculator	N/A

Screen Grab

Open App

Settings

1

2

3

Customize Keys

Customize the Epic Keys with USB dongle + JLab Work App
intl.jlab.com/software



Shop products | Product alerts | Burn-in your headphones

JLab Store + Burn-in Tool

