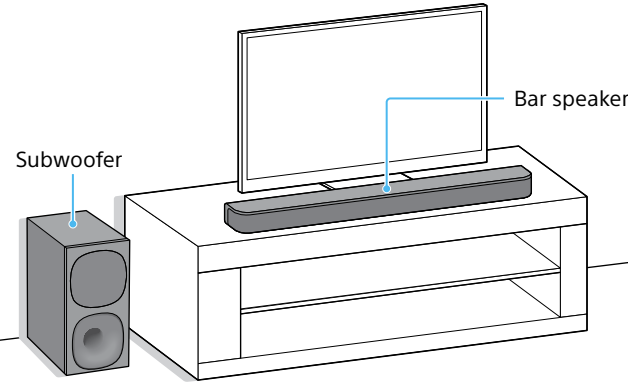


Sound Bar  
Startup Guide

HT-SD40

1 Choose an installation method

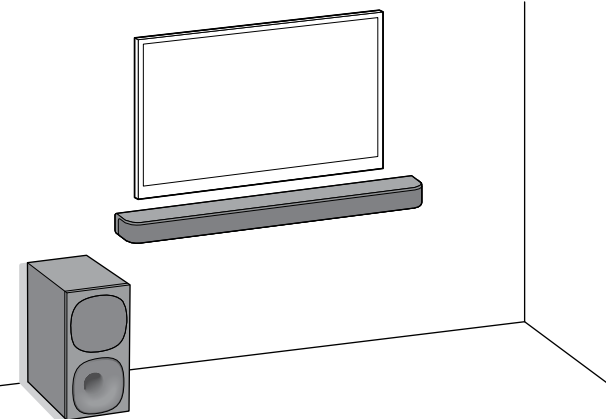
Installing on a shelf/stand



or

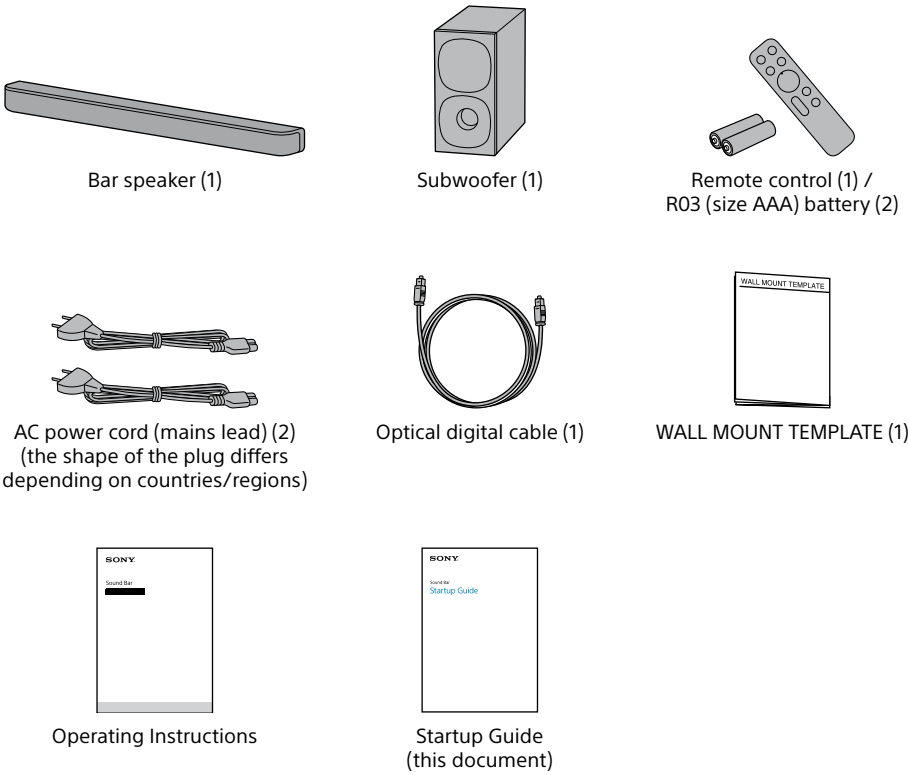
Mounting on a wall

For details, refer to the Operating Instructions (separate document).

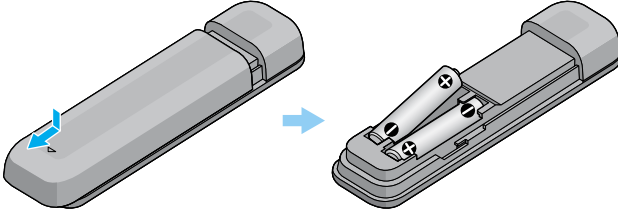


- Note**
- Disconnect the AC power cords (mains leads) of the TV and devices from the AC outlets (mains) in advance. The AC power cords (mains leads) must be reconnected in step 3.
  - Place the subwoofer 5 cm (2 in) or more away from a TV rack, walls, etc.
  - Do not lay the subwoofer on its side.

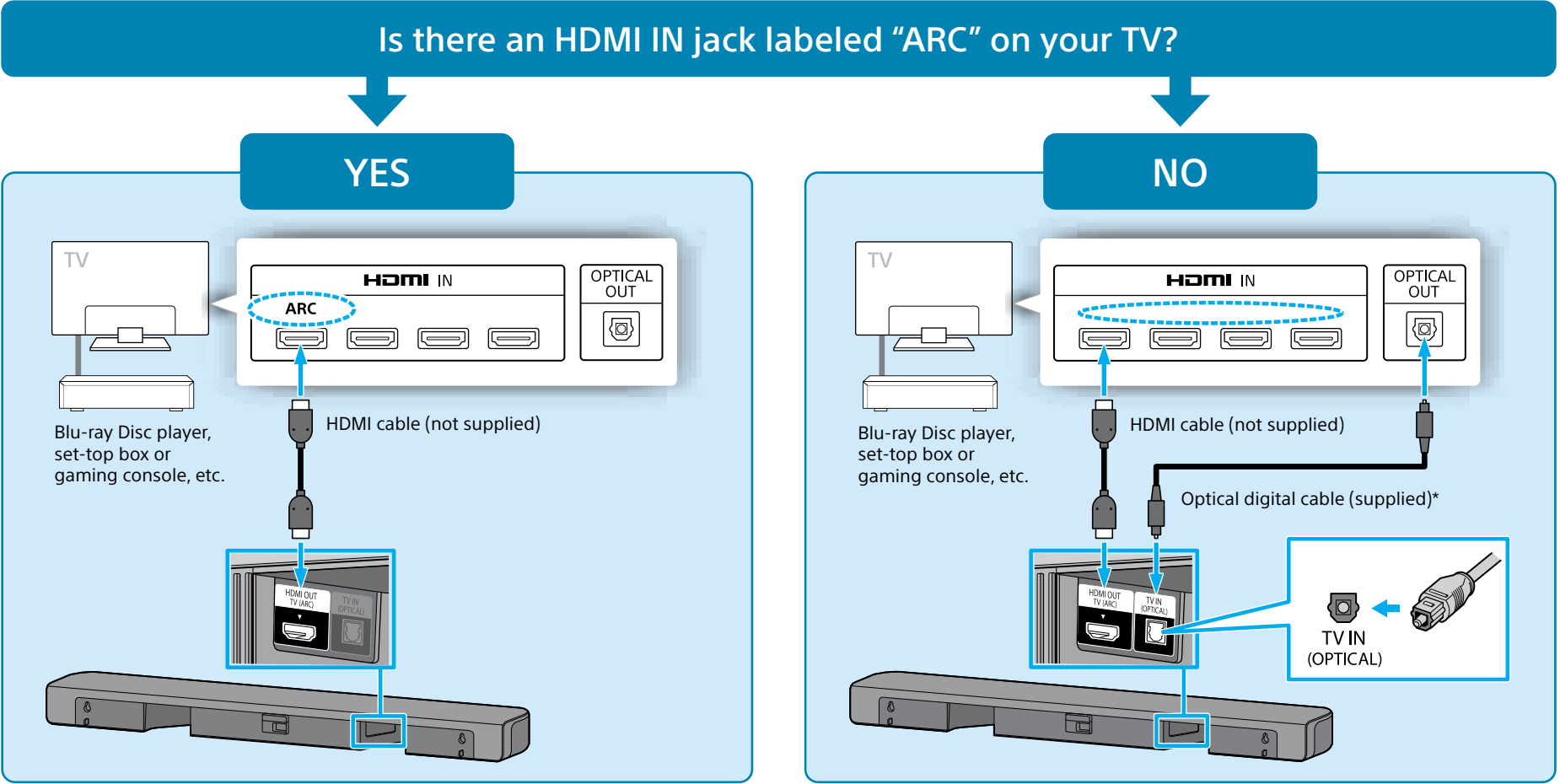
What's in the box



To set up the remote control

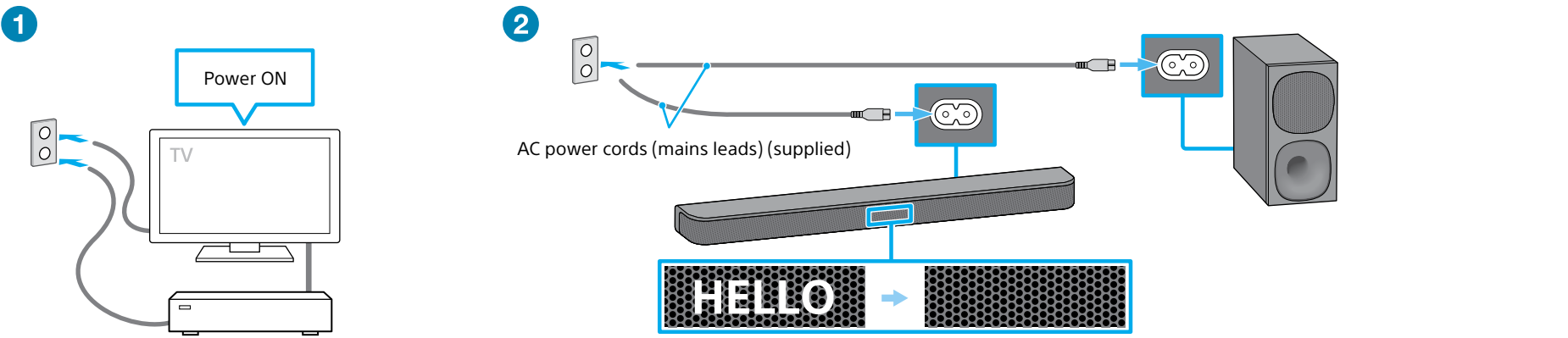


2 Connect with a TV



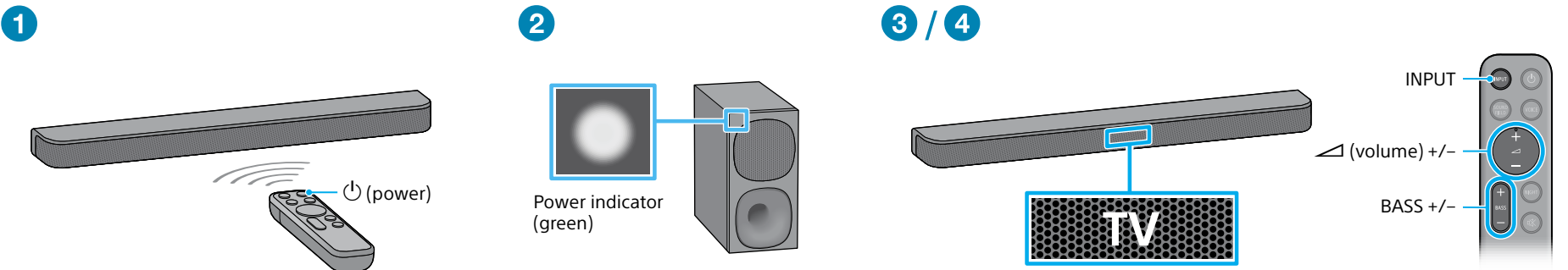
- Note**
- If your TV does not support the ARC (Audio Return Channel) function, connect an optical digital cable (supplied) to listen to the TV sound.
  - Check the shape of the TV IN (OPTICAL) jack on the bar speaker and the optical digital cable's connector, then insert the connector into the jack in the right direction. If you insert the connector in the wrong direction, the connector and jack may be damaged.

3 Connect AC power cords (mains leads) of the TV and the speaker system



- 1 Connect the AC power cord (mains lead) of the TV and turn on.
- 2 Connect the AC power cords (mains leads) (supplied) to the bar speaker and subwoofer, and then connect the cords to the AC outlets (mains).  
The remote control of the speaker system does not work until [HELLO] in the front panel display on the bar speaker disappears.

4 Listen to the sound



- 1 Press the power button on the remote control of the speaker system.
- 2 Confirm that the power indicator of the subwoofer is lit in green.  
When the connection with the bar speaker is completed, the power indicator of the subwoofer is lit in green.
- 3 Press INPUT to select [TV] input.  
Then select the program you want using the TV remote control.
- 4 Press the volume +/- button to adjust the speaker system volume and press BASS +/- to adjust the subwoofer volume.

- Note**
- Depending on the order in which you turn on the TV and the speaker system, the system may enter muting mode. In this case, turn on the TV first, then the system.