

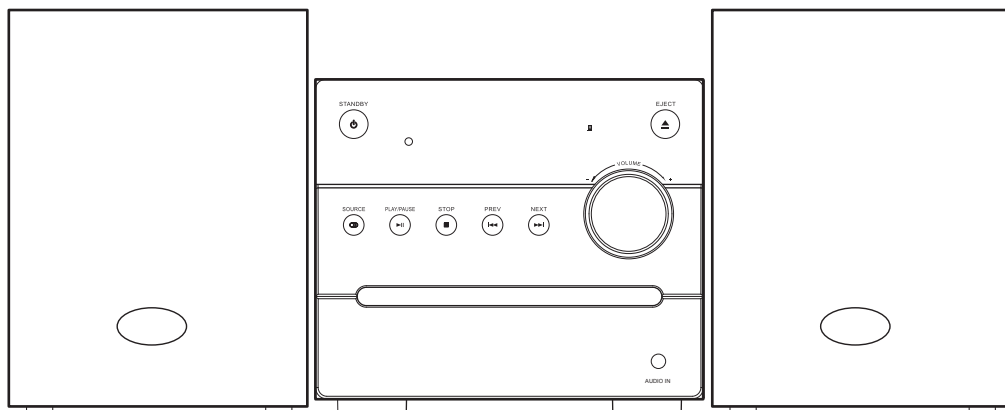
# BUSH - CD/DAB Hi-Fi Micro System

Installation & User Instructions – Please keep for future reference

259/3089 (D)

# BUSH

Real Life Technology



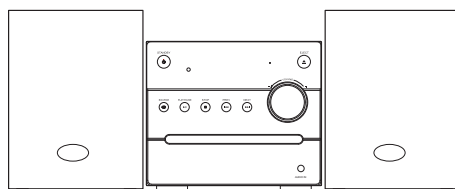
**Important – Please read these instructions fully before installing or using**

These instructions contain important information which will help you get the best from your appliance and ensure safe and correct installation, use and maintenance.

If you need help or have damaged or missing parts, call the Customer Helpline: 0870 600 3030

# Table of contents

- Accessories included ..... 3
- Overview of controls ..... 3
- Preparation for use ..... 4**
- Remote control battery installation ..... 4
- Connecting the loud speakers ..... 4
- Connecting the mains power ..... 4
- Standby mode ..... 4**
- General operation ..... 4**
- Volume controls ..... 4
- Mute function ..... 4
- Tone controls ..... 5
- DSP effects ..... 5
- Loudness function ..... 5
- Switching modes ..... 5
- DAB (Radio) operation ..... 5**
- Positioning the antenna ..... 5
- Auto scan mode ..... 5
- Manual tuning ..... 6
- Storing station presets ..... 6
- Recalling a station preset ..... 6
- Display modes ..... 6
- Secondary services ..... 7
- Pruning ..... 7
- DRC ( Dynamic Range Control ) ..... 7
- FM (Radio) operation ..... 7**
- Scanning for stations ..... 7
- Scan Modes ..... 7
- Storing station presets ..... 8
- Recalling a station preset ..... 8
- Display modes ..... 8
- CD operation ..... 8**
- Playback ..... 8
- Skipping Tracks ..... 8
- Fast Searching Tracks ..... 8
- Repeat Operation ..... 8
- Numeric buttons ..... 8
- Programme playback ..... 9
- Random CD Operation ..... 9
- Connecting an external audio device ..... 9**
- DAB availability ..... 9**
- UK Mains plug information ..... 10**
- Technical specifications ..... 10**
- Care & maintenance ..... 10**
- Disc handling information ..... 10**
- Disposal information ..... 10**



Product Code

CMC6DAB



## Safety information

**Important – Please read these instructions fully before using**

**CAUTION: TO REDUCE THE RISK OF ELECTRIC SHOCK, DO NOT REMOVE ANY COVER. NO USER-SERVICEABLE PARTS INSIDE, REFER ANY SERVICING TO QUALIFIED SERVICE PERSONNEL.**

- Please read this owner's guide
- Please take the time to follow the instructions in this owner's guide carefully. It will help you set up and operate your system properly and enjoy all of its advanced features.
- Please save this owner's guide for future reference.
- The product label is located on the back of the product.
- Heed all warnings - on the product and in the owner's guide.
- Do not use this apparatus near water or moisture.
- Do not use this product near a bathtub, washbowl, kitchen sink, and laundry tub, in a wet basement, near a swimming pool, or anywhere else that water or moisture is present.
- Only use attachments/accessories specified by the manufacturer.
- Unplug this apparatus during lightning storms or when unused for long periods of time - to prevent damage to this product.
- Refer all servicing to qualified service personnel
- Servicing is required when the apparatus has been damaged in any way: such as liquid has been spilled or objects have fallen into the apparatus; the apparatus has been exposed to rain or moisture, does not operate normally, or has been dropped -
- Do not attempt to service this product yourself.
- Opening or removing covers may expose you to dangerous voltages or other hazards.
- To prevent risk of fire or electric shock, avoid overloading wall outlets, extension cords, or integral convenience receptacles.
- Use suitable power sources - Plug the product into a suitable power source, as described in the operating instructions or as marked on the product.
- The mains plug is used as the disconnect device, the disconnect device shall remain readily accessible.



This symbol means that this unit is double insulated. An earth connection is not required.

### CAUTION : CLASS 1 LASER PRODUCT

This product utilizes a Class 1 laser. This laser DVD Player is equipped with safety switches to avoid exposure when the door is open and the safety interlocks are defeated. Invisible laser radiation is present when the Player's lid is open and the system's interlock has failed or been defeated. It is very important that you avoid direct exposure to the laser beam at all times. Please do not attempt to defeat or bypass the safety switches.



### LASER SAFETY

This unit employs a laser, only qualified service personnel should attempt repair.

- Any electrical work that is required to install this appliance **MUST** be carried out by a qualified electrician.
- Before making any electrical connections, ensure the following:
- Do not bend, stretch or pull the supply cable in order to avoid electric shock.
- The supply voltage should be the same as that indicated in the technical specifications and the appliance rating plate.
- When installed, the power socket must be within easy reach.
- If the socket outlets in your home are not suitable for the plug supplied with this unit check with a qualified electrician for replacement.
- The use of multiple connectors or extension cables are not recommended.
- The appliance must be connected to a 100-240 volt 50/60Hz AC supply by means of a three pin socket.
- The main plug is used as the disconnect device, the disconnect device shall remain readily operable.
- In order to disconnect the apparatus from the mains completely, switch off the outlet and remove the mains plug completely.



### CAUTION

**RISK OF ELECTRIC SHOCK!  
DO NOT OPEN!**



This product complies with European low voltage (2006/95/EC) and electromagnetic compatibility (2004/108/EC) directives.

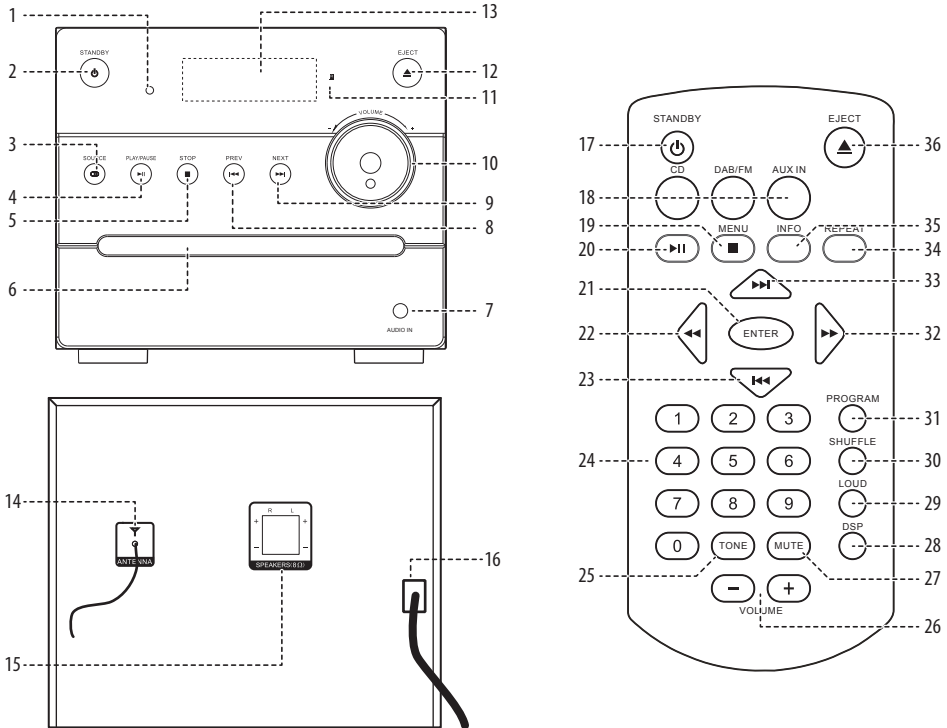
# Functions & controls

Please familiarize yourself with the parts and accessories listed below

## Accessories included

- 1 x CMC6DAB
- 1 x Remote control (with batteries)
- 2 x Speakers
- 1 x Instruction manual

## Overview of controls



### Main Unit

- 1:** STANDBY indicator LED
- 2:** STANDBY button
- 3:** SOURCE SELECT button
- 4:** PLAY/PAUSE button
- 5:** STOP button
- 6:** CD DRAWER
- 7:** AUX INPUT socket
- 8:** PREVIOUS ◀◀/SCAN- button
- 9:** SKIP ▶▶/SCAN+ button
- 10:** VOLUME control
- 11:** IR sensor
- 12:** DISC EJECT button

### 13:

- 13:** LED display
- 14:** ANTENNA cable
- 15:** SPEAKER terminals
- 16:** MAINS cable

### Remote Control

- 17:** STANDBY button
- 18:** SOURCE buttons
- 19:** MENU/STOP button
- 20:** PLAY/PAUSE button
- 21:** ENTER button
- 22:** FRWD ◀◀/TUNE- button
- 23:** PREVIOUS ◀◀/SCAN- button
- 24:** NUMERIC buttons

### 25:

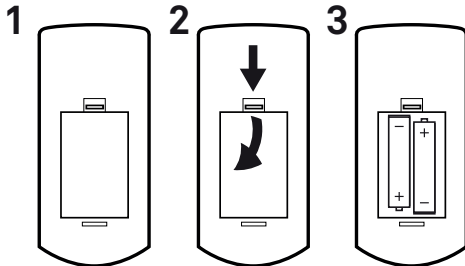
- 25:** TONE button
- 26:** VOLUME -/+ buttons
- 27:** MUTE button
- 28:** DSP button
- 29:** LOUD button
- 30:** SHUFFLE button
- 31:** PROGRAM button
- 32:** FFWD ▶▶/TUNE+ button
- 33:** SKIP ▶▶/SCAN+ button
- 34:** REPEAT button
- 35:** INFO button
- 36:** EJECT button

# Installation

## Preparation for use

### Remote control battery installation

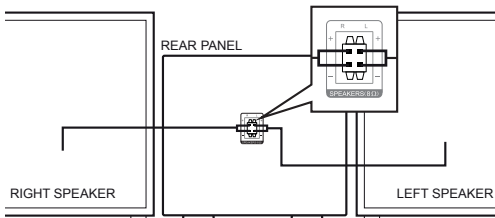
- 1: Remove the battery cover (as shown).
- 2: Insert 2 x AAA batteries (supplied), taking note that the polarities match up.
- 3: Replace the battery cover, in the same manner as you removed it.



### Notes on battery usage

- Do not insert battery into the remote control in the wrong direction.
- Do not charge, heat, open or short-circuit the battery. Do not throw battery into a fire.
- If the remote control does not function correctly or if the operating range becomes reduced, replace all batteries with new ones.
- Improper replacement of batteries may result in explosive hazard. It must be replaced only by batteries with the same or equivalent type.

## Connecting the loud speakers



- 1: Unwrap the speaker wires.
- 2: Place a speaker on either side of the main unit, preferably at the same height, and with at least 150mm between each speaker and the main unit.
- 3: Connect the speaker wires to the terminals on the rear of the unit (15). Take care to match the speaker placed to the LEFT to the LEFT output on the rear of the unit. Repeat for the RIGHT speaker.

## Connecting the loud speakers (cont)

- 4: When connecting ensure the RED wire connects to the RED terminal and the BLACK wire to the BLACK terminal.

## Connecting the mains power

- 1: Connect the mains plug to a UK wall outlet.
- 2: Extend the pig tail antenna as far as it can go.

**NOTE:** The quality of the DAB/FM reception will be influenced by the positioning of the pigtail aerial.

- 3: Press the **STANDBY** button (2, 17) to wake from standby.

## Standby mode

- 1: Press the **STANDBY** button on the unit (2) or press the **STANDBY** button (17) on the remote to put the system into standby mode. To resume normal operation press either button again.

**NOTE:** This unit is designed to enter **STANDBY** mode automatically after 20 MINUTES (approximately) of inactivity. Press the **STANDBY** button to wake the unit.

**NOTE:** When you power on the unit from standby the last used mode will resume.

## General operation

### Volume controls

- 1: Rotate the **VOLUME** control (10) clockwise or press the **VOLUME+** button (26) to increase the volume level.
- 2: Rotate the **VOLUME** control (10) anti-clockwise or press the **VOLUME-** button (26) to decrease the volume level.

### Mute function

- 1: Press the **MUTE** button (27) at any time to silence the output.
- 2: Press again to resume audio output.

## User instructions

### Tone controls

Adjust the Bass & Treble tone controls if required.

- 1: Press the **TONE** button (25) on the remote control.
- 2: The first adjustment is Bass. Use the **VOL+/-** buttons to adjust.
- 3: Press the **TONE** button again to edit the Treble using the **VOL+/-** buttons to adjust.
- 4: Press the **TONE** button once more to edit Volume using the **VOL+/-** buttons to adjust.

### DSP effects

- 1: Pressing the **DSP** button (28) repeatedly cycles through a set of **EQ** presets to alter the sound field. Choose from: Jazz, Rock, Classic, Pop, Live, Dance & Off.

### Loudness function

This function adds a rounder bass sound at low levels.

- 1: Press the **LOUD** button (29) on the remote to enable.
- 2: Press again to disable the effect.

### Switching modes

To switch between the available modes : CD, DAB/FM & AUX IN.

- 1: Press the **SOURCE** button (unit 3) to cycle through the options or press the relevant button on the remote control from **CD, DAB/FM (press repeatedly to cycle between DAB & FM) & AUX IN.**

### DAB (Radio) operation

Select DAB using either method described above.

- 1: After switching to **DAB** input mode for the first time a full scan of **DAB** stations is performed automatically.



During the full scan mode, the LCD will display a slide bar that indicates the progress of the scan, and the amount of radio stations that have been found so far. Once the scan has finished, the radio will select the first alphanumeric station.

### DAB (Radio) operation (cont)

**NOTE:** The station name will be shown on the top of the display. Information about the DAB radio station will be displayed on the bottom of the display.

- 2: To listen to the located **DAB** stations use either **PREVIOUS** ◀◀ (8) or **SKIP** ▶▶ (9) on the unit, ◀◀ (22) or ▶▶ (32) on the remote to cycle through the stations. When you reach the desired station press the **PLAY/PAUSE** button (4, 20) or **ENTER** button (21) on the remote to begin playback of that station.

**NOTE:** If no stations were found, or no DAB stations can be received currently [No DAB station] will be displayed. In this case you may need to perform another station scan.

### Positioning the antenna

Positioning of the aerial will influence the DAB signal quality.

- 1: To find the optimum position, select the display signal strength indicator by cycling through the display modes using the **INFO** button.



- 2: Once the indicator is displayed, move the aerial and observe the signal level as shown by the bar graph. When you are happy with the positioning, perform an auto-tune to capture all of the available stations.

### Auto scan mode

- 1: To activate the full scan press the **MENU** button (19).
- 2: When you see the <Autoscan> option press the **PLAY/PAUSE** or **ENTER** button. The unit will search for all available **DAB** stations that can be tuned.

# User instructions

## Manual tuning

As well as an auto tune function, you can manually tune the receiver.

- 1: Press the **MENU** button in **DAB** mode, and use either **◀◀ (8)** or **▶▶ (9)** on the unit, **◀◀ (22)** or **▶▶ (32)** on the remote to find **<Manual tune>** Press the **PLAY/PAUSE** button **(4)** on the main unit or **ENTER** button **(21)** on the remote to activate the manual tune options.
- 2: Now use the **◀◀ (8)** or **▶▶ (9)** on the unit, **◀◀ (22)** or **▶▶ (32)** on the remote to cycle through the **DAB** ensembles/multiplexes, which are numbered from **5A** to **13F**.
- 3: Press the **ENTER** or **PLAY/PAUSE** button to view the ensemble/multiplex details. Press the **ENTER** or **PLAY/PAUSE** button again to enter the multiplex.
- 4: To see what stations are present in the found ensemble/multiplex, just press either **◀◀ (8)** or **▶▶ (9)** on the unit, **◀◀ (22)** or **▶▶ (32)** on the remote. When you've located a station that you would like to listen to, press the **ENTER** or **PLAY/PAUSE** button.
- 5: Any stations found during the manual tune operation will be added to your station list.

## Storing station presets

It is possible to store up to 10 of your favourite stations. This will enable you to access your favourite stations quickly & easily.

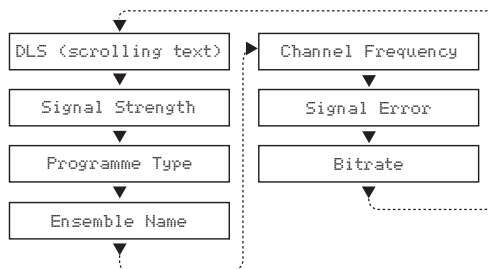
- 1: To store a preset, you must first be listening to the station that you would like to save.
- 2: Then press & hold one of the numeric buttons from **1** - **0** to store the station under that number. You will see **Preset X Stored** appear on the display with X being the number you stored the station under.

## Recalling a station preset

- 1: To select a preset, just press the required numeric button while in **DAB** mode to activate the station you stored.

## Display modes

Every time you press the **INFO** button on the remote control, the display will cycle through the following display modes: The information is displayed on the lower segment of the LCD display.



### DLS (Dynamic Label Segment)

Dynamic label segment is a scrolling message that the broadcaster may include with their transmissions. This message usually includes information, such as program detail etc.

### Signal Strength

Displays how strong the current signal being received is.

### Program type

This describes the "Style" or "genre" of music that is being broadcast e.g. "Rock" or "Classical".

### Ensemble/Multiplex (Group name)

A multiplex/ensemble is a collection of radio stations that are bundled and transmitted on one frequency. There are national and local multiplexes. Local ones contain stations that are specific to that area e.g. MXR West.

---

**NOTE: DAB – unlike normal radio, groups together several radio stations and transmits them on one frequency.**

---

### Channel Frequency

Displays the frequency information for the current station.

### Signal Error

Displays information regarding the error rate in the signal.

### Bit rate

This displays the type of broadcast you are receiving e.g. mono or stereo and what bit rate is being used.

## User instructions

### Secondary services

On some occasions you will see a ">>" symbol directly after the name of the station. This indicates that there are secondary services available to that station.

These secondary services contain extra services that relate to the primary station, e.g. a sports station may want to add extra commentaries. The secondary services are inserted directly after the primary station.

- 1: To activate a secondary service press the **FFWD** **▶▶ (32)** on the remote. You will see that the >> has changed to a << to indicate you have selected the secondary service.

```
Station list
< BBC R5L >> >
```

- 2: Press the **ENTER** or **PLAY/PAUSE** button to begin playback of the service.
- 3: To return to the original service press the **FRWD** **◀◀ (22)** and then **ENTER** or **PLAY/PAUSE**.

### Pruning

When the radio has performed a Scan in several locations you may find there are stored stations that you can no longer receive. This function automatically removes them from the stored station list.

- 1: Press the **MENU** button in **DAB** mode, and use either **◀◀ (8)** or **▶▶ (9)** on the unit, **◀◀ (22)** or **▶▶ (32)** on the remote to find <Prune> Press the **PLAY/PAUSE** button **(4)** on the main unit or **ENTER** button **(21)** on the remote
- 2: Use the **◀◀ / ▶▶** buttons on the remote to select **YES** and press **ENTER** or **PLAY/PAUSE** to select.

### DRC ( Dynamic Range Control )

This causes the radio to reduce the dynamic range of the audio signal. The purpose of this is to adapt the dynamic range of the audio signal to listening in a noisy environment.

---

NOTE: this is not available on some DAB stations.

---

- 1: Press the **MENU** button in **DAB** mode, and use either **◀◀ (8)** or **▶▶ (9)** on the unit, **◀◀ (22)** or **▶▶ (32)** on the remote to find <DRC> Press the **PLAY/PAUSE** button **(4)** on the main unit or **ENTER** button **(21)** on the remote.

### DRC ( Dynamic Range Control ) ( cont)

- 2: Choose between **DRC** off, **DRC** Low and **DRC** High using either **◀◀ (8)** or **▶▶ (9)** on the unit, **◀◀ (22)** or **▶▶ (32)** on the remote.
- 3: Press the **ENTER** or **PLAY/PAUSE** button to save the setting.

### FM (Radio) operation

Select FM using either method described on page 5

#### Scanning for stations

- 1: You can scan up or down the frequency range manually by pressing the **◀◀ (22)** or **▶▶ (32)** buttons on the remote or pressing the **◀◀ (8)** or **▶▶ (9)** buttons on the unit to increase or decrease the frequency in **0.05 MHz** increments. To scan through the frequency range quickly press and hold the **◀◀ (8)** or **▶▶ (9)** buttons on the unit or press the **◀◀ (23)** or **▶▶ (33)** buttons on the remote
- 2: Once a station has been found, the scanning will stop automatically. If no station is found, then the tuning will stop once it has cycled through the entire **FM** band (**87.5-108MHz**).

#### Scan Modes

When performing an scan you can set the sensitivity level of the stations to be found. EG: strong signals only or all stations.

- 1: In **FM** mode, press the **MENU** button, when <Scan Setting> appears on the display press the **ENTER** or **PLAY/PAUSE** button to view the submenu.
- 2: Use either **◀◀ (8)** or **▶▶ (9)** on the unit, **◀◀ (22)** or **▶▶ (32)** on the remote to select either **ALL STATIONS (which will detect any station, even with a weak signal)** or **STRONG STATION (which will only detect stations with a good signal strength)**. Press the **ENTER** or **PLAY/PAUSE** button to select the required option.
- 3: When you perform a scan as described in **SCANNING FOR STATIONS**, only stations fitting the applied setting will be detected.



# User instructions

## Storing station presets

It is possible to store up to 10 of your favourite stations. This will enable you to access your favourite stations quickly & easily.

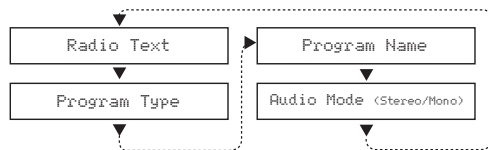
- 1: To store a preset, you must first be listening to the station that you would like to save.
- 2: Then press & hold one of the numeric buttons from **1 - 0** to store the station under that number. You will see Preset X Stored appear on the display with X being the number you stored the station under.

## Recalling a station preset

- 1: To select a preset, just press the required numeric button while in **FM** mode to activate the station you stored.

## Display modes

Every time you press the INFO button on the remote control, the display will cycle through the following display modes: The information is displayed on the lower segment of the LCD display.



### Radio text

As with DAB, the broadcaster can include a scrolling text that displays information about the current program. If Radio text information is not available, then the display will show <No RadioText>.

### Program type

This describes the "Style" or "genre" of music that is being broadcast e.g. "Rock" or "Classical". If no programme type has been set then <No PTY> will be displayed.

### Program name

This will display the frequency of the current station.

### Audio mode

This denotes whether the station is in Stereo or Mono mode.

## CD operation

### Playback

- 1: Make sure you are in **CD** mode, if not press the **CD** button on the remote (**18**) or press the **SOURCE** button (**3**) until you reach **CD**.
- 2: Press the **EJECT** button (**12, 36**), when the disc drawer pops out insert a disc (**label side facing upwards**), press the **EJECT** button again to close.
- 3: When the door is closed "**LOADING DISC**" will appear on the display as the unit detects compatible audio tracks.
- 3: Playback will begin automatically from Track **01**.
- 4: To stop playback press the **STOP** button (**5, 19**).
- 5: To pause playback press the **PLAY/PAUSE** button (**4, 20**) during playback. To resume playback press once more.

### Skipping Tracks

- 1: To skip to the next track on a disc press **▶▶** (**9, 33**).
- 2: To skip to the previous track press **◀◀** (**8, 23**).

### Fast Searching Tracks

- 1: To fast forward a track during playback press the **▶▶▶** (**32**) button. Each press of the button increases the search speed **EG: 2x & 4x** the next press will resume normal playback. To fast rewind a track during playback press the **◀◀◀** (**22**) button.

### Repeat Operation

- 1: During playback pressing the **REPEAT** button (**34**) will flag the current track to repeat indefinitely. You will see '**REPEAT:One**' on the display.
- 2: Pressing the **REPEAT** button again will repeat all tracks on the disc. You will see '**REPEAT:All**' on the display.
- 3: To cancel the repeat function press the **REPEAT** button for a third time. You will see '**REPEAT:Off**' on the display.

### Numeric buttons

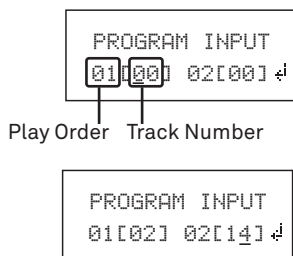
While listening to a CD a specific track number can be played by pressing the relative digit on the number buttons. **EG** track 6 would be 06. To play track 12 you would press the 1 button then 2.

## User instructions

### Programme playback

You may wish to play back tracks of a CD in a different order than the original disc was recorded in.

- 1: Press the **PROGRAM** button (31) to enter the programme setup function.
- 2: Use the **◀/▶** buttons (22, 32) to skip between the play order numbers.
- 3: Set the play order track numbers using the numeric keys.



**For example:** the diagram on the right would play track 02 as the first track and track 14 as the second track.

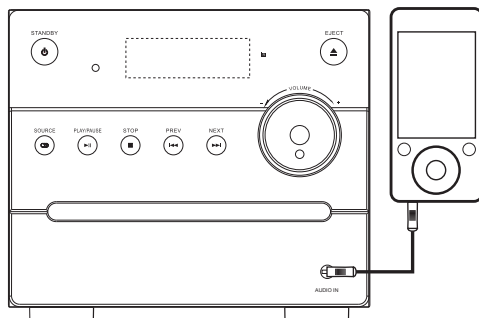
- 4: When tracks 1-2 are set use the **◀/▶** buttons (8,9 23, 33) to access further play order screens. Repeat steps 2-3 for the remainder of the program playlist.
- 5: When complete use the **◀/▶** buttons (8, 9) to scroll across to the **↗** arrow on the right of the display and press the **ENTER** or **PLAY/PAUSE** button to begin playback.
- 6: To cancel the program sequence press the **STOP** button 5, 19) twice.

### Random CD Operation

- 1: Press the **SHUFFLE** button (30) on the remote control. The **CD** contents will be played once in a random order. You will see **'SHUFFLE'** on the display.
- 2: To cancel the random operation press the **SHUFFLE** button again. You will see **'OFF'** on the display.

### Connecting an external audio device

External audio sources such as iPod's & MP3 players can be connected using a 3.5mm to 3.5mm audio cable (not supplied).



- 1: Connect one end of the cable to the **AUDIO** devices headphone /Line output and the other end to the **AUDIO IN** input (7) on the front of the unit.
- 2: Press the **SOURCE** button (3) until you reach the **AUX IN** option or press the **AUX IN** button on the remote control (18).
- 3: Adjust the volume to your desired level.

**NOTE:** when connecting via the headphone output the volume of the Micro system is affected by the volume control on the player. Ensure that the player is set to about 70-80% to avoid distortion.

### DAB availability

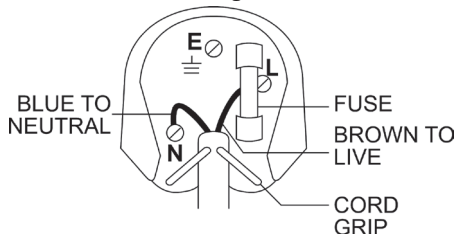
Check how many stations you can get in your area by texting DAB and your postcode to 88600# or find out which stations on the website at:

<http://www.getdigitalradio.com/>

## User instructions

### UK Mains plug information

For your convenience a mains plug with a fuse (3 Amp) has been fitted to this appliance. For your safety please observe the following information.



- The unit is designed to operate on AC mains supply 230 volts, 50 Hz.
- The wires in the mains lead are coloured in accordance with the following code:  
BLUE - NEUTRAL  
BROWN - LIVE

Under no circumstances should the Neutral or Live wires be connected to the 'E' (Earth) terminal.

### Technical specifications

Supply Voltage, Mains: ..... 220-240V~50Hz  
Max. Power Consumption: ..... 40W  
Speaker Power: ..... 2 x 7.5W  
FM: ..... 87.5-108 MHz  
DAB: ..... 174-240MHz  
Net Weight: ..... 3.0kg

### Care & maintenance

#### After using your radio

- Set to Standby.
- Switch the unit off at the mains and unplug it if you are leaving it unattended for a long period (holidays etc).
- Avoid leaving batteries fitted if you leave the radio unattended for long periods. They may leak and damage the radio.

#### Care and cleaning

- All care and cleaning operations should be carried out with the unit unplugged from the mains power.
- Occasionally wipe the cabinet with a lint free duster. Never clean the unit with liquids or solvents.

### Disc handling information

- Do not touch the playback side of the disc.
- Do not attach paper or tape to disc.



- Fingerprints and dust on the disc cause picture and sound deterioration. Wipe the disc from the centre outwards with a soft cloth. Always keep the disc clean.



- If you cannot wipe off the dust with a soft cloth, wipe the disc lightly with a slightly moistened soft cloth and finish with a dry cloth.
- Do not use any type of solvent such as thinner, benzene, commercially available cleaners or antistatic spray for vinyl. It may damage the disc.
- Do not store discs in a place subject to direct sunlight or near heat source.

- Do not store discs in a place subject to moisture and dust such as a bathroom or near a humidifier.
- Store discs vertically in a case, stacking or placing object on discs outside or their case may cause warping.

### Disposal information



#### WEEE marking "Information for the consumer"

**Disposal of your old product** Your product is designed and manufactured with high quality materials and components, which can be recycled and reused. When this crossed out wheeled bin symbol is attached to a product it means the product is covered by the European Directive 2002/96/EC. Please make yourself aware of the local collection system for electrical and electronic products. Please act according to your local rules and do not dispose of your old products with your normal household waste. The correct disposal of your old product will help prevent potential negative consequences for the environment and human health.

# User instructions

## Troubleshooting

In the unlikely event of difficulties with your appliance please follow the trouble shooting guide below.

If the problem persists, contact the retailer if the machine is still under guarantee.

Customer **helpline:** 0345 600 3021

Problem	Reason(s)	Solution(s)
No Power	<ul style="list-style-type: none"><li>• Power cable not connected to wall socket</li><li>• Power socket is not switched on</li></ul>	<ul style="list-style-type: none"><li>• Make sure the plug is connected</li><li>• Switch the power on</li></ul>
No Sound CD/AUX/RADIO	<ul style="list-style-type: none"><li>• Volume is too low</li></ul>	<ul style="list-style-type: none"><li>• Increase the volume</li></ul>
No Sound from AUX input	<ul style="list-style-type: none"><li>• AUX source volume is too low</li></ul>	<ul style="list-style-type: none"><li>• Increase the output volume of the AUX source.</li></ul>
Sound is distorted Sound is distorted from AUX input	<ul style="list-style-type: none"><li>• Volume is too high</li><li>• AUX source volume is too high</li></ul>	<ul style="list-style-type: none"><li>• Reduce the volume</li><li>• Reduce the output volume of the AUX source.</li></ul>
Unable to Play	<ul style="list-style-type: none"><li>• No disc in the tray</li><li>• Disc not loaded properly</li><li>• Disc is dirty</li></ul>	<ul style="list-style-type: none"><li>• Insert a compatible disc</li><li>• Check the disc loaded</li><li>• Clean the disc</li></ul>
Static Sound	<ul style="list-style-type: none"><li>• Poor reception</li></ul>	<ul style="list-style-type: none"><li>• Re-locate the antenna (FM)</li></ul>
Desired station not found	<ul style="list-style-type: none"><li>• Weak signal</li><li>• Station not available in your area</li></ul>	<ul style="list-style-type: none"><li>• Use the manual tune function</li><li>• See DAB availability website pg 9</li></ul>
Weak or no DAB signal	<ul style="list-style-type: none"><li>• DAB not available in your area</li></ul>	<ul style="list-style-type: none"><li>• See DAB availability website pg 9</li></ul>
I can hear a burbling noise on some stations	<ul style="list-style-type: none"><li>• Weak signal</li></ul>	<ul style="list-style-type: none"><li>• Try re-positioning the aerial (earphones)</li></ul>
Unit switches off after 20 minutes of inactivity	<ul style="list-style-type: none"><li>• Auto standby mode in operation</li></ul>	<ul style="list-style-type: none"><li>• This unit is designed to enter STANDBY mode automatically after 20 MINUTES of inactivity. Press the STANDBY button to wake the unit.</li></ul>

# Guarantee



## PRODUCT GUARANTEE

This product is guaranteed against manufacturing defects for a period of



Year

This product is guaranteed for twelve months from the date of original purchase.

Any defect that arises due to faulty materials or workmanship will either be replaced, refunded or repaired free of charge where possible during this period by the dealer from whom you purchased the unit.

The guarantee is subject to the following provisions:

- The guarantee does not cover accidental damage, misuse, cabinet parts, knobs or consumable items.
- The product must be correctly installed and operated in accordance with the instructions contained in this manual.
- It must be used solely for domestic purpose.
- The guarantee will be rendered invalid if the product is re-sold or has been damaged by inexpert repair.
- Specifications are subject to change without notice.
- The manufacturer disclaims any liability for the incidental or consequential damages.
- The guarantee is in addition to, and does not diminish your statutory or legal rights.

Guarantor: Argos Limited  
489 - 499 Avebury Boulevard  
Central Milton Keynes  
MK9 2NW