

nutribullet.
GO



User guide.

Important safeguards.

WHEN OPERATING YOUR NUTRIBULLET® GO, REMEMBER:
SAFETY ALWAYS COMES FIRST

Warning! To avoid the risk of serious injury, carefully read all instructions before operating your nutribullet® GO. When using any electrical appliance, basic safety precautions should always be observed, including the following important information.

! Save these instructions! ● FOR HOUSEHOLD USE ONLY

READ ALL INSTRUCTIONS CAREFULLY AND THOROUGHLY BEFORE OPERATING.

PERSONAL SAFETY

NEVER OPERATE THE UNIT WITHOUT FIRST ATTACHING THE CUP.

NEVER PUT HOT LIQUIDS IN THE BLENDING VESSEL. Use cool or room-temperature ingredients. Heated ingredients can create internal pressure in a sealed blending vessel, which may erupt upon opening and cause thermal injury.

WARNING: Friction from the rotating blade can cause ingredients to heat and generate internal pressure in the sealed vessel. DO NOT continuously operate the machine FOR MORE than ONE MINUTE. If the vessel feels warm to the touch after blending, allow it to cool before attempting to detach the blade. Once the temperature has decreased, slowly and

carefully untwist the blade with the opening pointed away from your body.

NEVER blend carbonated beverages. Built-up pressure from released gases can cause container to burst, resulting in possible injury. **Always make sure the cup is securely locked in place on the base before blending. The motor will not turn on unless the cup is fully locked in place. Do not attempt to remove the cup while the unit is in operation.**

NEVER permit any blended mixture to sit inside a sealed vessel without first releasing internal pressure. Sugars in fruit and vegetable ingredients can ferment, releasing gases that cause pressure to build within the vessel. When this happens, ingredients may burst out of the vessel when agitated by moving or opening.

To protect against fire, electrical shock and injury to persons, DO NOT immerse the motor base or cable in water or any other liquid.

BLADES ARE SHARP. Handle carefully and ALWAYS cover the blades with the Cup or Blade Cap when not in use.

DO NOT place hand or fingers inside the cup when attaching cup to base unit, and always keep hands and fingers away from the blade assembly.

The nutribullet® GO has sharp blades and moving parts and is NOT intended for use by children or persons with reduced physical, sensory, or mental capabilities, or who lack of experience and knowledge of its safe operation. Such persons require close supervision and thorough instruction on its proper use and safe operation. Close supervision is necessary when any appliance is used by or near children. Children should be supervised to ensure that they do not play with the appliance.

Turn off power when the appliance is not in use, before putting the cup on the base or taking it off the base, and before cleaning.

Always make sure the unit is properly and completely assembled before turning on the power and operating the appliance.

Blades may stop turning during usage if the cup is overfilled. If this occurs, completely turn off the unit by pressing the power button. Ensure that all moving parts have come to a complete stop, then invert the cup/blade/base assembly, detach the cup from the base, and remove excess food from the cup. Ensure remaining ingredients do not exceed the MAX Fill Line before reattaching the cup to the power base and resuming blending.

Do not leave the appliance unattended when in use.

Do not incinerate this appliance even if it is severely damaged. The lithium-ion batteries can explode in a fire. Always properly recycle products powered by lithium-ion batteries.

To eliminate any potential choking hazard for young children, remove and safely discard any protective coverings or plastic bags that the appliance or its parts may come in.

Ensure that the areas immediately under or next to the appliance are clean and dry before operating. **Do not operate when wet.**

Do not use this appliance for anything other than its intended use. Do not attempt to blend anything other than cool food or liquids intended for consumption. Misuse may cause injury.

Do not use this appliance if any parts appear to be damaged.

PRODUCT SAFETY

DO NOT put any non-food items into the cup for the purpose of blending.

This appliance is **NOT designed to be used with ice or frozen items. Do not use with frozen fruits or vegetables.**

Make sure the unit is turned off after each use. Ensure power is off (no light is on), the motor has stopped, and the blades have completely stopped moving before taking off cup or storing unit.

DO NOT let the USB cable touch hot surfaces or any extreme heat source, or become knotted, tangled, or frayed.

DO NOT modify the charging cord in any way. Do not use cord if it shows signs of fraying or other damage.

Regularly inspect the charging cable and the appliance for any damage.

Do not operate appliance with a damaged cable, or if the appliance malfunctions or is dropped or damaged in any manner. Contact Customer Service for further assistance.

The use of attachments not recommended or sold by the manufacturer may cause fire, electric shock, or injury, and will void the limited warranty.

Do not exceed the MAX Fill line with solid or liquid ingredients before blending. Doing so can result in leakage.

Any significant spillage onto the surface under or around the appliance, or onto the appliance itself, should be cleaned and dried before continuing to use the appliance.

Remove rinds and peels of fruit and vegetable ingredients before blending.

Do not blend stone fruit in this appliance unless pits/seeds have been removed.

Keep the appliance clean. Refer to the **Care and Maintenance** section for tips and best practices.

Do not attempt to repair or service this appliance. Contact customer service for further assistance.

If any of the contained instructions or warnings are not understood, **please contact Customer Service for further assistance.**

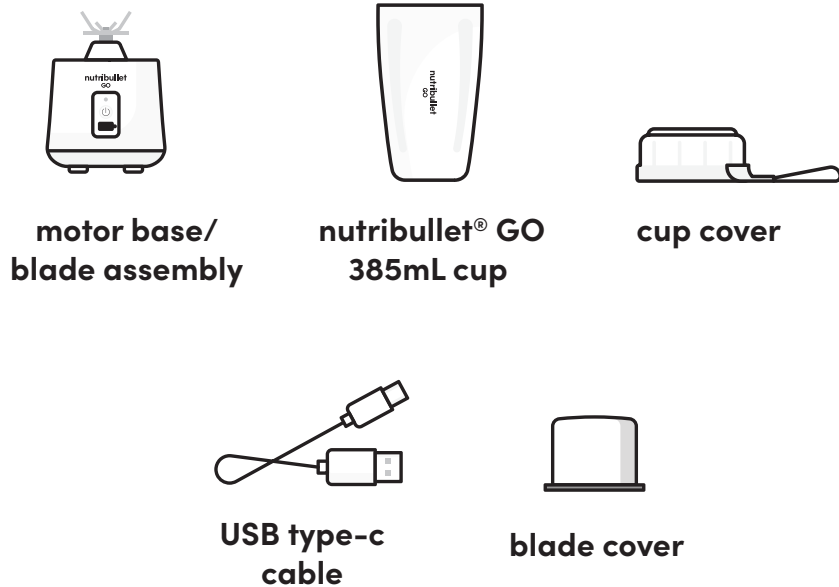
! Save these instructions!

Contents.

- 05 What's included**
- 06 Assembly guide**
- 07 Using nutribullet® GO**
- 09 LED light indications**
- 10 Recipes**
- 13 Care & maintenance**
 - 13 How to clean the nutribullet® GO
 - 13 Replacement parts
- 15 nutribullet® GO one-year limited warranty**

Thank you for purchasing the nutribullet® GO

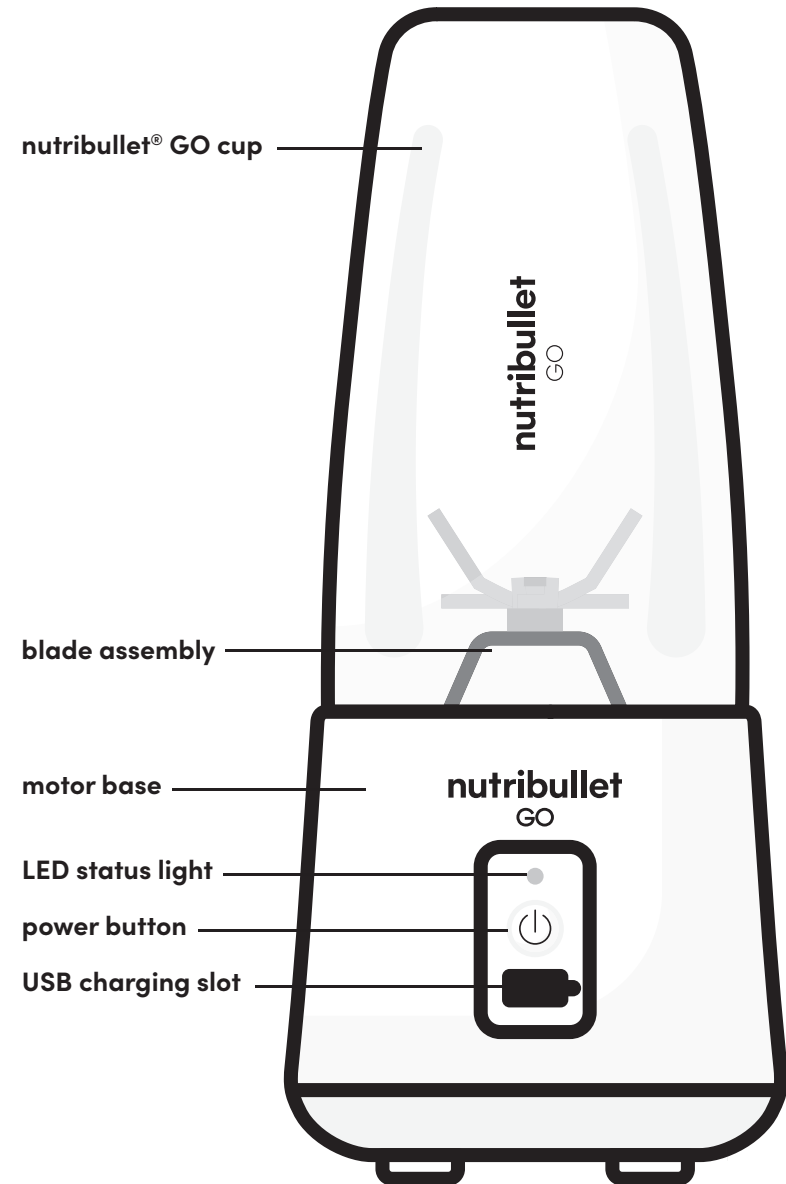
What's included.



Before you blend: prep steps.

- **CLEAN UNIT** (see Care and Maintenance section).
- **CHARGE UNIT** by plugging the smaller end of the included USB cable into the slot right below the Power Button (on the front of the base), and the larger end of the cable into any powered USB slot (in a USB plug adapter plugged into a power outlet, or on a computer, etc.).
- **We recommend fully charging the unit before using it for the first time. It should take under 5 hours to fully charge.**
- **A RED LIGHT** indicates the unit is charging.
- **A BLUE LIGHT** indicates the battery is fully charged

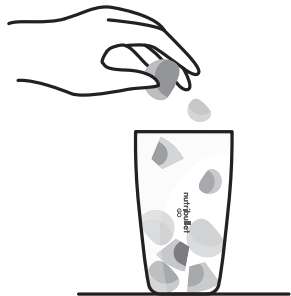
Assembly guide.



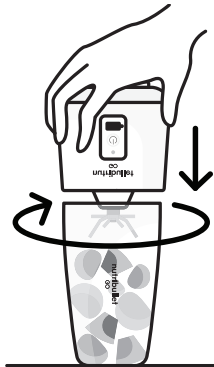
Using the nutribullet® GO.

CAUTION. Never put hot liquids in the blending vessel.

NOTE: ALWAYS make sure that the unit is powered off and the blades have come to a complete stop before separating the cup from the base.

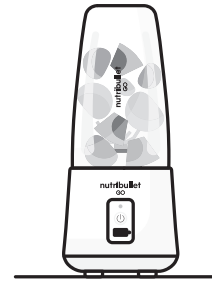


1 Add ingredients into the nutribullet® cup (but do not exceed the **MAX** line = 300 ml is ~10 fluid ounces). **Always leave a little room at the top of the cup for best blending results.**

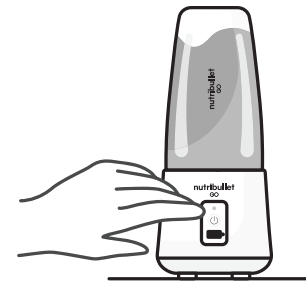


2 Holding the base from the bottom, flip it upside-down and lower onto the rim of the cup. Twist the base clockwise to firmly fasten it onto the cup. Press and hold the power button for 3 seconds. **The BLUE LIGHT on the power button will flash for 30 seconds** to indicate that the base and cup are locked, secure, and ready for blending.

NOTE: THE CUP MUST BE LOCKED, OR THE MOTOR WILL NOT RUN.



3 With the cup locked firmly in place on the base, slowly turn over the blender so the base can be placed on a dry, level surface for blending.



4 Press the power button **TWICE** in quick succession to start the motor and begin blending. The **BLUE LIGHT** will stay illuminated throughout the duration of operation. If you do not activate blending during the time the blue light is flashing, the blender will return to sleep mode and you must press and hold the power button for 3 seconds to wake the unit out of sleep mode.

NOTE: IF MOTOR IS ACTIVATED WHEN CUP IS EMPTY, THE MOTOR WILL SHUT OFF AUTOMATICALLY AFTER 3 SECONDS.

NOTE: The power button will only glow blue when the base and cup are fastened and locked in place. If the power button is not illuminated, or if it flashes red and blue*, keep twisting the cup onto the blade until properly secured.

5 Stop blending by pressing the **power button ONCE**. The blue LED light will turn off when the motor has powered off.

NOTE: This unit will automatically stop blending after 30 seconds. Do not operate unit for more than two consecutive cycles or continuously for more than 1 minute.

6 Once you have finished blending, flip the unit upside-down and twist the base anti-clockwise to remove it from the cup.



7 When not in use, screw the blade cover onto the base.

LED Light Indications.

During operation of your nutribullet® GO, you will notice LED lights glowing **BLUE** or **RED** at various points of operation. Here is what these lights indicate. (NOTE: a lack of illumination indicates that the unit is completely powered off; the motor is not in operation and the blades have come to a complete stop).

LED STATUS	INDICATES
RED LIGHT IS ILLUMINATED	UNIT PLUGGED IN, BATTERY IS CHARGING
BLUE LIGHT IS ILLUMINATED	UNIT PLUGGED IN, BATTERY FULLY CHARGED
FLASHING RED AND BLUE LIGHTS	CUP IS NOT FULLY LOCKED INTO THE BASE
FLASHING BLUE LIGHT	CUP IS LOCKED IN PLACE ON BASE, AND BLENDER IS READY TO USE
BLUE LED REMAINS ILLUMINATED AFTER DOUBLE-CLICKING POWER BUTTON	BLENDER IS IN ACTIVE USE AND RUNNING NORMALLY, LAST 30 SECONDS
FLASHING BLUE LIGHT AFTER BLENDING	UNIT IS DONE BLENDING
RED LED FLASHES 10 TIMES	BLADES ARE BLOCKED BY FOOD
RED LED FLASHES FOR 30 SECONDS	LOW BATTERY, NEEDS TO BE CHARGES
RED LED FLASHES 5 TIMES	UNIT IS OVERHEATING, NEEDS TO COOL DOWN BEFORE RUNNING AGAIN

Recipes.

Creamy strawberry banana smoothie.

- ½ CUP UNSWEETENED ALMOND COCONUT BLEND MILK (OR MILK OF CHOICE)
- 1 TBSP GREEK YOGURT
- 3 SMALL SMALL STRAWBERRIES, QUARTERED
- ½ SMALL BANANA, SLICED
- 2 TBSP VANILLA PROTEIN POWDER

Add all ingredients in the order listed and blend for the automatic 30-second cycle. If necessary, repeat the cycle for one more round to yield a smoother consistency.

Chocolate banana protein smoothie.

- $\frac{3}{4}$ CUP UNSWEETENED VANILLA ALMOND MILK (OR CHOICE ALTERNATIVE)
- 1 BANANA, SLICED
- 1 TBSP PEANUT BUTTER
- 2 $\frac{1}{2}$ TBSP CHOCOLATE PROTEIN POWDER

Add all ingredients in the order listed and blend for the automatic 30-second cycle. If necessary, repeat the cycle for one more round to yield a smoother consistency.

Blueberry vanilla smoothie.

- $\frac{3}{4}$ CUP UNSWEETENED ALMOND COCONUT BLEND MILK (OR MILK OF CHOICE)
- $\frac{1}{2}$ CUP BLUEBERRIES
- 2 TBSP VANILLA PROTEIN POWDER

Add all ingredients in the order listed and blend for the automatic 30-second cycle. If necessary, repeat the cycle for one more round to yield a smoother consistency.

Protein-packed kiwi smoothie.

- $\frac{3}{4}$ CUP COCONUT WATER
- 1 SMALL SOFT KIWI, QUARTERED
- 2 $\frac{1}{2}$ TBSP CHOCOLATE PROTEIN POWDER

Add all ingredients in the order listed and blend for the automatic 30-second cycle. If necessary, repeat the cycle for one more round to yield a smoother consistency.

Matcha smoothie.

- $\frac{3}{4}$ CUP UNSWEETENED VANILLA ALMOND MILK (OR CHOICE ALTERNATIVE)
- $\frac{1}{2}$ SMALL AVOCADO, QUARTERED
- 1 TBSP MATCHA POWDER

Add all ingredients in the order listed and blend for the automatic 30-second cycle. If necessary, repeat the cycle for one more round to yield a smoother consistency.

Citrus berry.

- $\frac{3}{4}$ CUP FRESH GRAPEFRUIT JUICE
- $\frac{1}{2}$ SMALL LEMON-JUICE ONLY
- $\frac{1}{2}$ CUP BLUEBERRIES

Add all ingredients in the order listed and blend for the automatic 30-second cycle. If necessary, repeat the cycle for one more round to yield a smoother consistency.

Care & maintenance.

Cleaning and caring for your nutribullet® GO is as simple as using it. Here are some tips and best practices that will keep your machine in top shape.

Here's how to clean the nutribullet®:

STEP 1:

Always make sure the nutribullet® GO is turned off after each use.

STEP 2:

Simply place the cup and lid on the top rack of the dishwasher or hand wash with warm, soapy water and rinse. Gently rinse the blade assembly and carefully clean with a damp sponge or cloth.

NOTE: DO NOT fully submerge the motor base or directly run under water.

The nutribullet® GO blade assembly is NOT dishwasher safe.

WARNING

Always be extremely careful not to touch the blades, as these are very sharp.

WARNING

DO NOT PUT HOT LIQUIDS IN THE BLENDING VESSEL.

WARNING

NEVER SUBMERGE MOTOR BASE INTO WATER OR ANY OTHER LIQUID.

STEP 3:

When not in use, store all parts of the blender together in a safe place where they will not be damaged and won't cause harm.

Replacement parts.

To order additional parts and accessories, please visit our website at bulletbrands.com.au / bulletbrands.co.nz

CDB GOLDAIR

one (1) year limited replacement warranty statement.

If your product becomes defective due to faulty material or workmanship within a period of 1 year from the date of purchase, we warrant to do the following:

- **For New Zealand Consumers:**
We will replace the product with a new product, free of charge, or repair the product at our cost, at our discretion.
- **For Australian Consumers:**
Our goods come with guarantees that cannot be excluded under the Australian Consumer Law. You are entitled to a replacement or refund for a major failure and for compensation for any other reasonably foreseeable loss or damage. You are also entitled to have the goods repaired or replaced if the goods fail to be of acceptable quality and the failure does not amount to a major failure.

YOUR WARRANTY IS SUBJECT TO THE FOLLOWING CONDITIONS:

- **DO NOT** operate the appliance with a damaged plug or cord, or if the unit has been dropped, damaged or dropped in water. To avoid the risk of electric shock, do not disassemble or attempt to repair the appliance on your own. If the supply cord is damaged, it must be replaced by a qualified electrician in order to avoid a hazard. Incorrect re-assembly or repair can cause a risk of electric shock or injury to persons when the appliance is used.
- The item has not been misused, abused, neglected, altered, modified or repaired by anyone.
- The item has been subjected to fair wear and tear.
- The item has not been used for trade, professional or hire purposes.

- The item has not sustained damage through foreign objects, substances or accident.

YOUR WARRANTY DOES NOT COVER:

- Components that are subject to natural wear and tear caused by normal use in accordance with operating instructions.
- Unauthorised/improper maintenance/handling or overload is excluded from this warranty.
- For guarantee claims, you will need to submit a proof of purchase in the form of a valid receipt that displays date and place of purchase.

This warranty does not replace but is in addition to your statutory rights.

This warranty does not apply to accessories supplied with the item.

This warranty applies only to the original purchaser and may not be transferred.

Replacement items will be covered by the limited warranty for the balance of the warranty period from the date of the original purchase.

PLEASE NOTE:

Only the defective product or parts returned to place of purchase will be replaced under this warranty.

CDB GOLDAIR

NEW ZEALAND
PO Box 100-707
NSMC
Auckland 0745
0800 285538
www.bulletbrands.co.nz

AUSTRALIA
PO Box 574
South Morang
Victoria 3752
1300 285538
www.bulletbrands.com.au

nutribullet is a registered trademark of CapBran Holdings, LLC.
Copyright © 2020 CapBran Holdings, LLC. All rights reserved.
Los Angeles, CA 90025, USA. Made in China.

bulletbrands.com.au / bulletbrands.co.nz

MODEL: (NBG-100) NB07300

RATING: 7.4V

USB INPUT FOR CHARGE: 5V  2A 10W

Capital Brands Distribution, LLC, Los Angeles, CA 90025

nutribulletgo.com | All rights reserved.

nutribullet® and the nutribullet® logo are trademarks of

CapBran Holdings, LLC registered in the U.S.A. and worldwide.

Illustrations may differ from the actual product. We are constantly striving to improve our products, therefore the specifications contained herein are subject to change without notice.

210809